

MILITARY COLLEGE OF MEDICAL SCIENCES



Dar Es Salaam | Zanzibar | Mwanza Campuses



PROSPECTUS 2022-2023

The image shows the entrance gate of the Military College of Medical Sciences. The gate is a large, arched structure with the college's name inscribed on it. Two emblems are visible on either side of the arch. In the foreground, two individuals are standing near the gate, looking towards the campus. The background features a row of trees and a building. The entire image is overlaid with a semi-transparent blue filter.

MILITARY COLLEGE OF MEDICAL SCIENCES

**YOUR
FUTURE STARTS
HERE**

TABLE OF CONTENTS

COMMANDANT'S MESSAGE.....VIII

1.0 INTRODUCTION

1.1	ABOUT MILITARY COLLEGE OF MEDICAL SCIENCES	1
1.2	LOCATION OF COLLEGE	1
1.3	CAMPUSES AND CENTRES.....	1
1.4	OBJECTIVES AND FUCTIONS	2
1.5	VISION, MISSION AND CORE VALUES	3
1.6	MCMS ORGANIZATION CHART	4
1.7	MANAGEMENT TEAM	5
1.8	HEADS OF ACADEMIC DEPARTMENTS	5
1.9	HEADS OF OTHER DEPARTMENTS.....	5
1.10	MEMBERS OF ACADEMIC STAFFS	6
1.11	COLLEGE INSTRUCTORS	6
1.12	CLINICAL INSTRUCTORS- 521 KJ	8
1.13	INSTRUCTOR UNDER CONTRACT.....	9
1.14	STUDENTS WALFARE	10

2.0 COLLEGES' AWARDS

2.1	DIPLOMA AWARDS (THREE YEARS).....	13
-----	-----------------------------------	----

3.0 ADMISSION INFORMATION

3.1	ENTRY REQUIREMENTS.....	13
-----	-------------------------	----

4.0 FINANCIAL REQUIREMENTS

4.1	FEE DESCRIPTION	18
4.2	MODE OF PAYMENTS.....	18
4.3	PAYMENT SCHEDULE	18
4.4	FEE STRUCTURES IN ACADEMIC YEAR 2022/2023.....	19
4.5	REGISTRATION PROCESS	23

5.0 ACADEMIC PROGRAMMES

5.1.0	DIPLOMA IN CLINICAL MEDICINE	24
5.1.1	INTRODUCTION.....	24
5.1.2	AIMS OF THE PROGRAMME	24

5.1.3	PROGRAMME OBJECTIVES	24
5.1.4	PROGRAMME DURATION.....	25
5.1.5	NTA Level 4 (CMT).....	25
5.1.6	NTA Level 5 (CMT)	26
5.1.7	PROGRAMME DURATION.....	26
5.1.8	STUDY METHODS	26
5.1.9	ELIGIBILITY TO SIT FOR END OF SEMESTER EXAMINATION	27
5.1.10	ELIGIBILITY TO ENTER SEMESTER TWO.....	27
5.1.11	EXAMINATION REGULATIONS	27
5.1.12	EXAMINATION IRREGULARITIES	29
5.1.13	SCORE RANGES AND GRADING SYSTEM	29
5.1.14	GRADE POINTS FOR MODULE PERFORMANCE	30
5.1.15	AWARD CLASSIFICATION	30
5.1.16	CLASS OF AWARDS	30
5.1.17	DISPOSAL OF A FAILED CANDIDATE	30
5.1.18	SUMMARY OF MODULES.....	31
5.1.19	METHODS OF STUDY	32
5.1.20	STUDENTS ASSESSMENT	32
5.1.21	ASSESSMENT METHODS	32
5.1.22	ELIGIBILITY TO ENTER SEMESTER 2.....	33
5.1.23	ELIGIBILITY TO SIT FOR END OF SEMESTER EXAMINATION	33

NTA Level 6 (CMT)

5.1.24	PROGRAMME DURATION.....	34
5.1.25	METHODS OF STUDY	34
5.1.26	ASSESSMENT OF STUDENTS	34
5.1.27	ASSESSMENT METHODS.....	35
5.1.28	MANAGEMENT OF ASSESSMENT.....	36
5.1.29	ELIGIBILITY TO SIT FOR END OF SEMESTER EXAMINATION.....	36
5.1.30	ELIGIBILITY TO ENTER SEMESTER TWO.....	36
5.1.31	EXAMINATION REGULATIONS.....	37

5.1.32	EXAMINATION IRREGULARITIES.....	37
5.1.33	SCORE RANGES AND GRADING SYSTEM.....	37
5.1.34	AWARD CLASSIFICATION.....	38
5.1.35	SEMESTER AND CUMULATIVE GPA CALCULATION.....	38
5.1.36	CLASS OF AWARDS.....	38
5.1.37	AWARD OF NTA LEVEL 6 GRADUTE.....	39
5.1.38	DISPOSAL OF A FAILED CANDIDATE.....	39
5.1.39	DISTRICT HOSPITAL ATTACHMENTS.....	40
5.1.40	SUMMARY OF MODULES.....	40

5.2.0 DIPLOMA IN CLINICAL DENTISTRY (CDT)

5.2.1	INTRODUCTION.....	42
5.2.2	AIMS OF THE PROGRAMME.....	42
5.2.3	PROGRAMME OBJECTIVES.....	43
5.2.4	PROGRAMME DURATION.....	43
5.2.5	NTA Level 4 (CDT).....	43
5.2.6	NTA Level 5 (CDT).....	45
5.2.7	PROGRAMME DURATION	45
5.2.8	STUDY METHODS.....	45
5.2.9	ELIGIBILITY TO SIT FOR END OF SEMESTER EXAMINATION.....	45
5.2.10	ELIGIBILITY TO ENTER SEMESTER 2.....	46
5.2.11	EXAMINATION REGULATIONS.....	46
5.2.12	EXAMINATION IRREGULARITIES.....	48
5.2.13	SCORE RANGES AND GRADING SYSTEM	48
5.2.14	GRADE POINTS FOR MODULE PERFORMANCE.....	48
5.2.15	AWARD CLASSIFICATION.....	48
5.2.16	CLASS OF AWARDS.....	49
5.2.17	DISPOSAL OF A FAILED CANDIDATE.....	49
5.2.18	SUMMARY OF MODULES.....	50
5.2.19	METHODS OF STUDY.....	50
5.2.20	STUDENTS ASSESSMENT	51

5.2.21	ASSESSMENT METHODS.....	51
5.2.22	ELIGIBILITY TO ENTER SEMESTER TWO.....	52
5.2.23	ELIGIBILITY TO SIT FOR END OF SEMESTER EXAMINATION.....	52

NTA Level 6 (CDT)

5.2.24	PROGRAMME DURATION.....	53
5.2.25	METHODS OF STUDY.....	53
5.2.26	ASSESSMENT OF STUDENTS.....	53
5.2.27	ASSESSMENT METHODS.....	54
5.2.28	MANAGEMENT OF ASSESSMENT.....	55
5.2.29	ELIGIBILITY TO SIT FOR END OF SEMESTER EXAMINATION.....	55
5.2.30	ELIGIBILITY TO ENTER SEMESTER TWO.....	56
5.2.31	EXAMINATION REGULATIONS.....	56
5.2.32	EXAMINATION IRREGULARITIES.....	56
5.2.33	SCORE RANGES AND GRADING SYSTEM.....	56
5.2.34	AWARD CLASSIFICATION.....	57
5.2.35	SEMESTER AND CUMULATIVE GPA CALCULATION.....	57
5.2.36	CLASS OF AWARDS.....	57
5.2.37	AWARD OF NTA LEVEL 6 GRADUATE.....	58
5.2.38	DISPOSAL OF A FAILED CANDIDATE.....	58
5.2.39	DISTRICT HOSPITAL ATTACHMENTS.....	59
5.2.40	SUMMARY OF MODULES.....	59

5.3.0 DIPLOMA IN NURSING AND MIDWIFERY (NMT)

5.3.1	INTRODUCTION.....	60
5.3.2	AIMS OF THE PROGRAMME.....	60
5.3.3	OBJECTIVES.....	61
5.3.4	PROGRAM DURATION.....	61
5.3.5	ASSESSMENT METHODS.....	61
5.3.6	REGULATIONS FOR EXAMINATIONS/MANAGEMENT OF ASSESSMENT.....	63
5.3.7	END OF SEMESTER EXAMINATIONS.....	63

5.3.8	FINAL QUALIFYING EXAMINATION.....	64
5.3.9	PASSING THE FINAL EXAMINATION.....	65
5.3.10	EXAMINATION COMPONENTS CONTRIBUTION.....	65
5.3.11	EXAMINATION APPEALS.....	65
5.3.12	SCORE RANGES AND GRADING SYSTEM.....	65
5.3.13	AWARD CLASSIFICATION.....	66
5.3.14	TRAINING REGULATIONS.....	66
5.3.15	SUMMARY OF PROGRAMME MODULES.....	67
5.3.16	AWARD.....	70

5.4.0 DIPLOMA IN MEDICAL LABORATORY SCIENCES

5.4.1	INTRODUCTION.....	71
5.4.2	AIMS OF THE PROGRAMME.....	71
5.4.3	OBJECTIVES.....	71
5.4.4	PROGRAM DURATION.....	72
5.4.5	ASSESSMENT METHODS.....	72
5.4.6	REGULATIONS FOR EXAMINATIONS/MANAGEMENT OF ASSESSMENT.....	73
5.4.7	END OF SEMESTER EXAMINATIONS	73
5.4.8	EXAMINATION APPEALS	74
5.4.9	SCORE RANGES AND GRADING SYSTEM.....	74
5.4.10	AWARD CLASSIFICATION.....	74
5.4.11	AWARD CLASSIFICATION AND CONDITION OF THE AWARD.....	75
5.4.12	TRAINING REGULATIONS.....	75
5.4.13	SUMMARY OF PROGRAMME MODULES.....	76
5.4.14	AWARD.....	79

PROSPECTUS 2022/2023 REVIEW TEAM

1	Lt Col MA Mawaka	Chairman
2	Lt Col SA Kalongola	Academic Officer
3	Lt Col AE Bashaula	Head, CDT
4	Lt Col ST Nyumayo	Head, NMT
5	Maj ED Chacha	Member, NMT
6	Capt MM Jabir	A/Head, LMT
7	Capt CE Ulomi	A/Head, CMT
8	Capt TH Hamis	A/UPM
9	Ssgt Makuri NN	A/PR Office
10	Ssgt Mkumbo RJ	IT Personnel
11	Sgt Athman RK	Librarian
12	Maj GW Mremi	Secretary



Major General (Dr) GS Mhidze *ndc*
MD, M Med ENT
COMMANDANT



Colonel (Dr) AJ Kitumbo
MD, M Med OBS & GYN
CHIEF INSTRUCTOR

COMMANDANT'S MESSAGE



On behalf of the Management and Staff of the Military Collage of Medical Sciences (MCMS), I take this opportunity to welcome you at our Institution. Our college, which is quite a unique blend of military and civilian students and staff, is located in a tranquil part of the City and is a learning community that seeks success of all those students who have decided to join our college. We do not only explain or demonstrate to our students but also we make sure that our scholars are inspired in order to achieve competencies in various disciplines of medical field. It is with this great honour and pleasure that I welcome all new students for the academic year 2022/2023 to the MCMS. I welcome you to join us

in our march towards the achievement of a greater recognition within the intellectual community. I also wish to take this opportunity to welcome back the continuing students. I congratulate you for passing examinations of the previous academic year, 2021/22.

The college is vested with enough and qualified staff who hold different health specialties in various cadres. The staffs are dedicated to imparting you with quality and standard knowledge, skills and competences of your choices that matches with modern science and technology for quality health services provision as with contemporary world market in health field. It is upon you now to utilize them audaciously for acquisition of your carriers.

As the Commandant, I am determined to build on our well- established position of providing a conducive

learning environment and skill-based training thus, generate high quality and competent health professional graduates in the level of diploma.

I encourage you to take the bold step towards a life changing educational journey at the Military Collage of Medical Sciences and you will never be disappointed.

Thank you

Maj Gen, (Dr). Gabriel S. Mhidze
(MD, M Med ENT, ndc)

Comdt - Military College of Medical
Sciences



1.0 INTRODUCTION

1.1 ABOUT MILITARY COLLEGE OF MEDICAL SCIENCIES

The Military College of Medical Sciences is a College established under Section 10 (2) of the National Defense Act, 1966 (Cap 192 R. E 2002) by the Minister of Defense and National Service on 8th December 2014. The College was renovated and equipped by the Federal Republic of Germany through the program for equipment support to developing countries. The College was handed over to the Minister of Defense and National Service Hon. Dr Hussein Ali Hassan Mwinyi, (MP) on 29 September 2015 by His Excellence Egon Kochanke, the Germany Ambassador to Tanzania. The college enrolls both civilian and military students for the diploma courses. The military studies are exclusively for military personnel only.

1.2 LOCATION OF COLLEGE

The Military College of Medical Sciences Main Campus is located in Kinondoni district in Kawe ward, at Lugalo area about 10 Km from City Centre.

1.3 CAMPUSES AND CENTRES

Currently, the College has two operating campuses offering four academic programmes for Diploma. The campuses are MCMS Zanzibar and MCMS Mwanza both enrolls Diploma Programmes.

The College also operates two centers in Tabora and Mbeya where they offer courses for only military personnel. In all these centers and campuses MCMS has adequate teaching amenities such as lecture theaters, library, skills Labs, teaching lab and ICT facilities.

1.4 OBJECTIVES AND FUNCTIONS

The objectives and functions of the College are to:

01	02	03
To provide a suitable place for Learning, Education and Research in Health sciences.	To prepare students through regular and professional courses in the field of health sciences for Degrees, Diplomas, Certificates and other awards.	To be the main producer of Key Health Experts in the military and beyond.
04	05	06
To be the main adviser to TPDF administration/ management on training and research on health matters.	To conduct training of health experts in accordance with the requirements of the National Council for Technical Education (NACTE) and the Ministry of Health, Community Development, Gender, Elderly and Children (MoHCDGEC).	To liaise with other teaching institutions in order to provide high quality training and exchange programs.

1.5 VISION, MISSION AND CORE VALUES

VISION STATEMENT



To become a Medical College of Excellence in training health professionals, public health service personnel and military Medical Leadership, Researchers, within the country and beyond.

MISSION STATEMENT



To provide suitable learning environment for learning and working so as to achieve quality training, Research and Service delivery in health and related fields in the military and the public at large

CORE VALUES

In performing our functions, we as the College are guided by the following core values:

Professionalism



We strive to adhere to highest professional ethics and standards and to impart these elements to student.

Excellence



We are committed to excellence. We shall continue to recruit the most promising students and college staff to provide them with resources to excel.

Adaptability



We are committed to embrace latest scientific and technological advancements and to adapt them towards sustaining excellence.



Competitiveness

We shall strive to cultivate excellence in competitiveness, responsiveness and integrity.



Partnerships

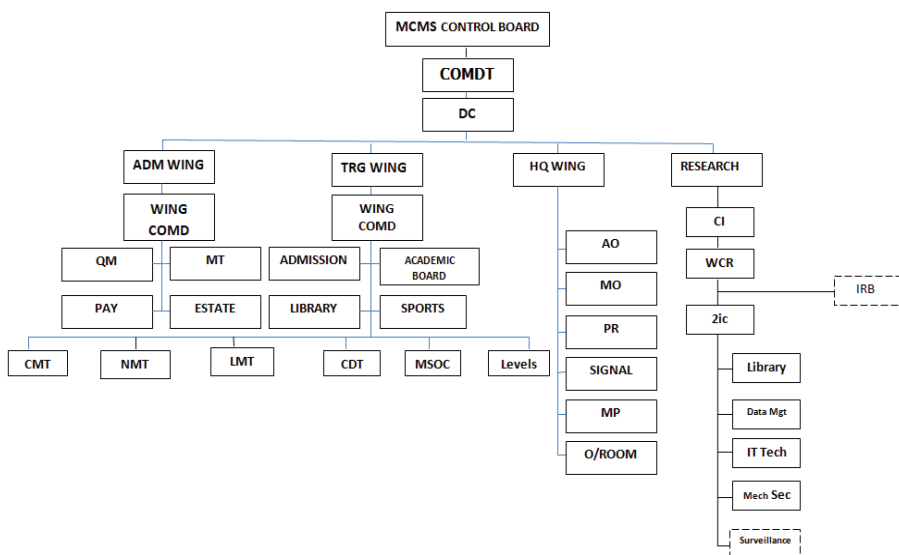
We are a new and dynamic institution, eager to learn from all available best practices so that together we can grow stronger and move forward. We encourage interdisciplinary communication and joint researches, forge new alliances for innovation in the emerging new science and provide an interface where students, administrative and academic staff will work together for common goals.



Health as a security issue

The College will impart knowledge related to health as an important component of national security.

1.6 MCMS ORGANIZATION CHART



1.7 MANAGEMENT TEAM

Maj Gen GS Mhidze (MD, M Med ENT)	Commandant
Col AJ Kitumbo (MD, M Med OBS & GYN)	Chief Instructor
Lt Col JO Gelano (ADCM, Masters in Health System)	Wing Comd TRG
Lt Col UA Nayowe (ADCM, MBA)	Wing Comd Admn
Lt Col MA Mawaka (MSc in Tropical Disease Control)	Wing Comd Research
Lt Col SA Kalongola (MSc in Public Administration, BSC Nursing Educ)	Academic Officer
Lt Col FS Kaluwa (MSc in Accounting & Finance)	UPM
Maj MM Chicco (Master in Laws)	Legal Officer
Maj HH Ituja (MD)	MO
Capt AW Mpogoro (BA in Political Science & Public Admin)	Public Relations Officer
Ssgt Tegera CS (Technical Store man L1)	A/QM

1.8 HEADS OF ACADEMIC DEPARTMENTS

Lt Col SA Bashaula (ADCD, MPH)	Principal CDT
Lt Col ST Nyumayo (MSc in Midwifery and Women Health)	Principal DNT
Maj MD Shemwetta (MD, M Med Anat Pathology)	Principal CMT
Maj VJ Bandi (BSc in Education, MSc (Parasitology & Med Entomology)	Principal MLT

1.9 HEADS OF OTHER DEPARTMENTS

Lt Col MA Mawaka (MSc in Tropical Diseases Control)	Head, Department of Research
Capt SB Ludovick (MD, M Med)	Head, Examinations
Capt AD Mwanambogo (BSc in Microbiology)	Head, Admission

1.10 MEMBERS OF ACADEMIC STAFFS

1.11 COLLEGE INSTRUCTORS

S/N	FULL NAMES	EDUC. & ACADEMIC QUALIFICATION
1.	Maj Gen GS Mhdze	MD, M Med ENT
2.	Col AJ Kitumbo	MD, M Med OBS & GYN
3	Lt Col JO Gelano	ADCM, Masters in Health System
4.	Lt Col AN Bashaula	MPH
5.	Lt Col UA Nayowe	ADCM, MBA
6.	Lt Col MA Mawaka	MSc in Tropical Diseases Control
7.	Lt Col CG Mswanya	MPH
8.	Lt Col SA Kalongola	MSc in Public Administration, Bsc in Nursing Educ
9.	Lt Col ST Nyumayo	MSc in Midwifery and Women Health
10.	Lt Col RE Nyeura	MD
11.	Lt Col JR Kimpundu	BSc in Pharmacy
12	Maj MD Shemwetta	MD, M Med Anat Pathology
13.	Maj FJ Kigomba	MD
14.	Maj ZI Kalembo	MD
15.	Maj ES Ngaga	MD
16.	Maj VJ Bandi	BSc in Education, MSc Parasitology & Med Ento
17.	Maj ED Chacha	BSc EHS
18.	Maj TO Mlowezi	MSc in Midwifery and Women Health
19.	Maj AM Mhando	MD
20.	Maj MT Mrema	M Med Dentistry
21.	Maj HH Ituja	MD
22.	Maj JC Masanja	MD
23.	Maj GW Mremi	Adv.Dip in IT
24.	Capt HB Kabange	MD,MSc Anatomy
25.	Capt CE Ulomi	MD, MSc Physiology
26.	Capt FM Kabisi	MD, MSc Anatomy

27.	Capt SB Ludovick	MD, M Med Molecular
28.	Capt MM Jabir	MSc in Epidemiology
29.	Capt AD Mwanambogo	BSc in Microbiology
30.	Capt ZC Maganga	BSc in Biology
31.	Lt RH Kundyia	BSc in Nursing Management
32.	Lt WJ Kwingwa	Adv.Dip in Nursing Educ, BSc Sociology
33.	Lt RH Mbassa	M Med
34.	Lt JE Matemba	BSc in Nutrition
35.	Lt GP Mnyema	BSc in Microbiology
36.	WOII Deo Sebastian Chatanda	B GD
37.	WOII Zacharia Muyenjwa Mafuru	Human Resource Mgt
38.	WOII Grace Lucas Eddy	Dip in ICT
39.	Ssgt Ally Hamimu Msike	MBA, BBA
40.	Ssgt Keneth Stephen Sanga	BA in Public Administration
41.	Ssgt Miraji Hassan Kalili	BSc in Nursing Education
42.	Ssgt Goodluck Marwa Chacha	Dip in ICT
43.	Ssgt Reuben John Mkumbo	Dip in ICT
44.	Ssgt Valentina Cosmas Ndunguru	BSc in Nursing
45.	Ssg Ally Jumanne Kimu	BSc in Nursing
46.	Sgt James Paul Mpeka	Dip in CIT
47.	Cpl Edwini Goodluck Lyimo	Dip in ICT
48.	Civ Oliver Katabwa	Adv Dip in Nursing, BA in Sociology, MA in Sociology
49.	Civ Mwita Rilla	MSc in Midwifery and Women Health, BSc in Nursing,
50.	Civ Joseph Kalongola	BSc in Environment Management, Dip in Environment Health,
51.	Civ Wilhelmina Nyamara	BSc in Nursing

52.	Civ Oliver Katabwa	MSc in Sociology, BA in Sociology, Adv Dip in Nursing
53.	Civ Josephine Mwakanyamale	AMO, MSc in Sociology
54.	Civ Reginald Magehema	BSc in pharmacy
55.	Civ Frida Kibassa	BSc in Nursing, in Public Health

1.12 CLINICAL INSTRUCTORS- 521 KJ

S/N	FULL NAMES	EDUC. & ACADEMIC QUALIFICATION
56.	Col EK Ndosì	MD, M Med
57.	Col RS Said	MD, M Med
58.	Lt Col EP Kakoye	ADO
59.	Lt Col GD Bukwamo	Dip in LAB
60.	Lt Col AS Mmbaga	AMO
61.	Lt Col HM Lukupulo	LAB
62.	Lt Col HF Shembilu	Dip in LAB
63.	Lt Col WO Mwiru	AMO
64.	Maj DM Bìlta	BSc in Pharmacy
65.	Maj SJ Temu	MD
66.	Maj AS Kaduri	MD, M Med
67.	Maj MK Gudu	MD
68.	Maj SJ Mduma	MD, M Med
69.	Maj DM Nyahurya	MD
70.	Maj JR Muhuga	MD, M Med
71.	Maj MJ Maduhu	MD
72.	Maj NB Lulabuja	MD, M Med
73.	Maj FA Masse	MD, M Med
74.	Maj SI Said	MD, M Med
75.	Maj EL Mmbando	MD
76.	Maj FD Maeda	MD, M Med
77.	Maj VH Lyandala	MD, M Med
78.	Capt MI Mkadara	Dip LAB
79.	Capt HA Hamad	Dip LAB

80.	Capt MJ Chang'a	BSc LAB
81.	Capt NH Lyandala	MD
82.	Capt GO Shani	AMO
83.	Capt KC Ndege	MD
84.	Capt JF Mkandara	MD
85.	Capt EG Lyoto	ADDS
86.	Capt MO Kombo	MD M Med
87.	Lt NR Mbonde	B Sc. LAB
88.	Lt MJ Sindin	B Sc. Pharmacy
89.	Lt FO Mohamed	B Sc. Pharmacy
90.	Lt RJ Rwaja	BSc. LAB
91.	Lt JW Kivuyo	BSc LAB
92.	Lt BS Msemakweli	MDS , M M ed
93.	Lt RG Yotamu	MD
94.	Lt IE Lema	MD
95.	WOII Ayudi Said	AMO
96.	Ssgt Jamidu Ismail	ADO
97.	Ssgt Musa Momboka	ADO
98.	Ssgt Donald John Chigamba	BSc LAB
99.	Cpl Mlekwa Mgawe	Dip in LAB
100.	Pte Mmari CS	Dip in Pharmacy
101.	Pte Ninde JJ	Dip in Pharmacy

1.13 INSTRUCTOR UNDER CONTRACT

S/N	FULL NAMES	EDUC. & ACADEMIC QUALIFICATION
102.	Brig Gen (Rtd) JH Mwinula	MD, M Med Paediatrician

1.14 STUDENT WELFARE

Office of the Dean of Students

The office of the Dean of Students provides a range of services to the students. The Dean is responsible for the coordination of all students' affairs with the Management in general and the Department of Academic Affairs in particular. She/he also provide all the necessary guidance and Counseling to students.

Accommodation

It is the responsibility of the student to secure his/her accommodation.

The College has a hostel for male and female students. The student hostel is co-located within the college campus. The rooms are fully furnished with beddings, reading tables and executive chairs. Each room accommodates two students. Toilets and bathrooms are located at each end of the block. The hostel rooms are available on application and issued to those who pay the required hostel fees. The resident students will be obliged to abide to all rules and regulations regarding customs and etiquette, decorum and decency of the dormitory living.

Postal and Banking Services

Postal services can be obtained at the Post Office in town. While there is a Banking services offered by Bank Agency in the campus, other Banking

services are offered by several banks in town and along Mwenge area.

Cafeteria / Canteen Services

The College cafeteria is located within the campus. Services are decentralized, and students' meals are served at two different canteens namely, Canteen number one and two, also variety of meals will be served at affordable prices. All meals will be eaten within the College cafeteria and no meals will be taken to hostel rooms.

The services are offered during the following times:

- **Breakfast: 07:00-11:00am;**
- **Lunch: 11:00-17:00 pm;**
- **Dinner: 17:00-20:00 pm.**

This schedule may change from time to time.

Shopping Services

The college shop stocks a variety of products such as stationeries, soft drinks, toiletries, etc.

Recreation and Sports

The College has in-door and outdoor Sports and game facilities, these facilities include a football pitch, concrete basketball, volleyball and netball courts; and other indoor games. Students meet the cost of their sports gear. Apart from encouraging students and staff to participate in various sports and games for competition

and recreational purposes, the MCMS students meet neighboring sportsmen.

Medical Services

Students are expected to observe normal health and safety regulations, in the event of illness or accident, the Dean of Students should be informed immediately.

Medical care is available at Lugalo Hospital which is close proximity to the Collage and in several hospitals in Dar es Salaam at large. In regards to this, National Health Insurance Fund (NHIF) provides health cover to students at a fee.

Library Services and Facilities

The College has a good Library enriched with different Books, Journals, Novels and News Papers

to both printed and electronic information resources from COTUL. Also, possess a good collection of Training Video, Films/Audio Cassettes and professional slides.

The Library is the heart of the College as it provides internet services to users for learning and scientific research activities. Currently it maintains a collection of more than 5,000 books, 135 Novels and over 300 printed journals.

The Library opens for 16 hrs every day

Opening Hours

- **Monday to Friday: 0600 hrs to 2200 hrs.**
- **Saturday: 0800 hrs to 1430 hrs**
- **Closed on Sunday and Public Holidays**



ICT Services and Facilities



The College has numerous Computer Laboratories which are used by students and staff for learning purposes. The Labs enable students to undergo practical sessions in Computer Applications Module.

Students' Union

There exists a students' organization at the College its main purposes is to promote and safeguard students' general interests. In addition it serves as a channel of communication between students and College authorities. It also deals with students' social, cultural, and other recreational activities.



2.0 COLLEGES' AWARDS

2.1 DIPLOMA AWARDS (THREE YEARS)

1. Diploma in Clinical Medicine
2. Diploma in Clinical Dentistry
3. Diploma in Nursing and Midwifery
4. Diploma in Medical Laboratory Sciences

3.0 ADMISSION INFORMATION

3.1 ENTRY REQUIREMENTS

DIPLOMA PROGRAMMES - Three Years Programmes

Diploma in Clinical Medicine-NTA Level 4 (CMT)	Admission Requirements: <ul style="list-style-type: none">• Admission to the program will be open to candidates who have a Certificate of Secondary Education Examination (CSEE).• All applications to join the college are made through NACTE central Admission System.• Applicant through Direct entry into an Ordinary Diploma Course in Clinical Medicine (Clinical Officer) must have a principal pass of minimum 'D' credits in Biology, Chemistry, and Physics. A pass in English Language and Basic Mathematics is an added advantage
---	---

<p>Diploma in Clinical Medicine-NTA Level 5 (CMT)</p>	<p>Admission Requirements:</p> <ul style="list-style-type: none"> • Admission to a candidate who has qualified Basic Technician Certificate in Clinical Medicine (NTA Level 4) from recognized health training Institutions
<p>Diploma in Clinical Medicine-NTA Level 6 (CMT)</p>	<p>Admission Requirements:</p> <ul style="list-style-type: none"> • Admission to the program of Ordinary Diploma in Clinical Medicine will be open to those qualified NTA level 5 in Clinical Medicine from a recognized institution. • Admission to this level will be open to both pre and in-service candidates with Technician Certificate in Clinical Medicine from a recognized institution.
<p>Diploma in Clinical Dentistry-NTA Level 4 (CDT)</p>	<p>Admission Requirements:</p> <ul style="list-style-type: none"> • Admission to the program will be open to candidates who have a Certificate of Secondary Education Examination (CSEE). • Applicant through Direct entry into an Ordinary Diploma Course in Clinical Dentistry (Dental therapist) must have a principal pass of minimum 'D' credits in Biology, Chemistry, and Physics. A pass in English Language and Basic Mathematics is an added advantage. • All applications to join the college are made through NACTE Central Admission System.

<p>Diploma in Clinical Dentistry-NTA Level 5 (CDT)</p>	<p>Admission Requirements:</p> <ul style="list-style-type: none"> • Admission to NTA Level 5 will be open to candidates who have a Basic Technician Certificate in Clinical Dentistry (NTA Level 4) from recognized health training Institutions.
<p>Diploma in Clinical Dentistry-NTA Level 6 (CDT)</p>	<p>Admission Requirements:</p> <ul style="list-style-type: none"> • Admission to the program of Ordinary Diploma in Clinical Dentistry will be open to those candidates who have qualified NTA level 5 in Clinical Dentistry from a recognized institution. • Admission to this level will be open to both pre and in-service candidates with Technician Certificate in Clinical Dentistry from a recognized institution
<p>Diploma in Nursing and Midwifery (NMT) NTA LEVEL 4-6</p>	<p>Admission Requirements:</p> <ul style="list-style-type: none"> • Admission to the program will be open to candidates who have a Certificate of Secondary Education Examination (CSEE). • All applications to join the college are made through NACTE Central Admission System. • Applicant through Direct entry into an Ordinary Diploma Course in Nursing and Midwifery must have a principal pass of minimum 'D' credits in Biology, Chemistry, and Physics.

Diploma in Medical Laboratory Tech (MLT)

- **A pass in English Language and Basic Mathematics is an added advantage.**
- Admission to NTA Level 5 will be open to candidates who have a Basic Technician Certificate in Nursing and Midwifery (NTA Level 4) from recognized health training Institutions.
- Admission to this level will be open to both pre and in-service candidates with Technician Certificate in Nursing and Midwifery from a recognized Institution.

Admission Requirements:

- Admission to the program will be open to candidates who have a Certificate of Secondary Education Examination (CSEE) or its equivalent (for those trained outside the country)
- All applications to join the college are made through NACTE Central Admission System
- Applicant through Direct entry into an Ordinary Diploma Course in Clinical Laboratory must have a principal pass of minimum 'D' credits in Biology, Chemistry, Physics, Math and Engineering Science.
A pass in English Language and Basic Mathematics is an added advantage.

	<ul style="list-style-type: none"> • Admission to NTA Level 5 will be open to candidates who have a Basic Science Certificate in Medical Laboratory Sciences (NTA Level 4) from recognized health training Institutions. • Admission for NTA Level six (6) shall be open to both pre and in service candidates with Technical Certificate in Medical Laboratory Sciences from recognized Institutions.
--	--

4.0 FINANCIAL REQUIREMENTS

4.1 FEE DESCRIPTION

The fee structure for the respective academic year is communicated to all students well in advance. For the academic year 2022/2023 the fee structure is herewith attached. At the beginning of the academic year, all students will be required to produce evidence of sponsorship by the government or any other organization, otherwise they will be personally expected to pay full tuition and college fees or portion of the fees not covered by the sponsor at the beginning of the semester before they can be permitted to use the college facilities.

4.2 MODE OF PAYMENTS

After receiving the admission letter, student supposed to make payments as per instructions below;

- a. Tuition fee, Medical Expenses, ID card, Caution money, Internet Fee, Graduation Fee, Prospectus, Accommodation Fee, Practical experience book, College Uniform, Internet Fee, Practical experience book Fee, Sports & Games, Stationery and Internal Examination Fee, NACTVET Quality Assurance Fee, National Examination Fee, Supplementary Examination Fee, Research and field study Fee shall be paid to Account No. **01J1013388100 - CRDB**, Name of Account: **MILITARY MEDICAL SCHOOL**.
- b. Condolence fund shall be paid to Account No. **0150273170200 - CRDB**, Name of Account: **KUHANI-MCMS**.

4.3 PAYMENT SCHEDULE

All fees should be paid upfront before registration. However in-case of financial difficulties fees must be paid in two instalments as follows:

- **At the Beginning of Semester 1 - 60%**
- **At the Beginning of Semester 2 - 40%**

4.4 FEE STRUCTURES IN ACADEMIC YEAR 2022/2023

Fee Structure- Diploma in Clinical Medicine Training 2022/23

S/N	ITEMS/PARTICULARS	Amount (TZS)		
		DIPLOMA (NTA L4)	DIPLOMA (NTA L5)	DIPLOMA (NTA L6)
1.	Registration	30,000/=	-	-
2.	Tuition Fee	1,200,000/=	1,200,000/=	1,200,000/=
3.	ID Card	15,000/=	-	-
4.	NHIF Fee	55,000/=	55,000/=	55,000/=
5.	Caution money	50,000/=	-	-
6.	Condolence	60,000/=	60,000/=	60,000/=
7.	Stationeries, and Internal Examinations Fee	150,000/=	150,000/=	150,000/=
8.	Accommodation Expenses	450,000/=	450,000/=	450,000/=
9.	National Examination Fee (MoH)	150,000/=	150,000/=	150,000/=
10.	Sports, Attire and Facilities	100,000/=	-	-
11.	Internet Fee	80,000/=	80,000/=	80,000/=
12.	NACTE Quality Assurance Fee	15,000/=	15,000/=	15,000/=
13.	Clinical Coat (Part of Uniform)	50,000/=	-	-
14.	Practicum Guide and Procedure Book	30,000/=	30,000/=	30,000/=
15.	College Prospectus	20,000/=	20,000	20,000/=
16.	Two pairs of College Uniform (Gown, Shirts, and Trousers)	120,0000/=	-	-
17.	Cost for Cleanliness	80,000/=	80,000/=	80,000/=
18.	Medical Examination	10,000/=	-	-
19.	Community Medicine Field Work	-	500,000/=	-
20.	Graduation Fee	-	-	50,000/=
21.	District Hospital Attachment	-	-	500,000/=
	TOTAL	2,655,000/=	2,790,000/=	2,840,000/=

Fee Structure - Diploma in Clinical Dentistry 2022/23

S/N	ITEMS/PARTICULARS	AMOUNT (TZS)	
		DIPLOMA (NTA L4)	DIPLOMA (NTA L5)
1.	Registration Fees	30,000/=	-
2.	Tuition Fees	1,200,000/=	1,200,000/=
3.	ID Card	15,000/=	-
4.	Medical Expenses (NHIF) Fee	55,000/=	55,000/=
5.	Caution money	50,000/=	-
6.	Condolence	60,000/=	60,000/=
7.	Stationeries, and Internal Examinations Fee	150,000/=	150,000/=
8.	Accommodation Expenses	450,000/=	450,000/=
9.	National Examination Fee (MoH)	150,000/=	150,000/=
10.	Sports, Attire and Facilities	100,000/=	-
11.	Internet Fee	80,000/=	80,000/=
12.	NACTE Quality Assurance Fee	15,000/=	15,000/=
13.	Clinical Coat (Part of Uniform)	50,000/=	-
14.	Practicum Guide and Procedure Book	30,000/=	30,000/=
15.	College Prospectus	20,000/=	20,000
16.	Two pairs of College Uniform (Gown, Shirts, and Trousers)	120,0000/=	-
17.	Cost for Cleanliness	80,000/=	80,000/=
18.	Medical Examination	10,000/=	-
	TOTAL	2,655,000/=	2,290,000/=

Fee Structure - Diploma in Nursing and Midwifery 2022/23

S/N	ITEMS/PARTICULARS	Amount (TZS)		
		DIPLOMA (NTA L4)	DIPLOMA (NTA L5)	DIPLOMA (NTA L6)
1.	Registration Fees	30,000/=	-	-
2.	Tuition Fee	1,200,000/=	1,200,000/=	1,200,000/=
3.	ID Card	15,000/=	-	-
4.	NHIF Fee	55,000/=	55,000/=	55,000/=
5.	Caution money	50,000/=	-	-
6.	Condolence	60,000/=	60,000/=	60,000/=
7.	Stationeries, and Internal Examinations Fee	150,000/=	150,000/=	150,000/=
8.	Accommodation Expenses	450,000/=	450,000/=	450,000/=
9.	National Examination Fee (MoH)	150,000/=	150,000/=	150,000/=
10.	Sports and Games	100,000/=	-	-
11.	Internet Fee	80,000/=	80,000/=	80,000/=
12.	NACTE Quality Assurance Fee	15,000/=	15,000/=	15,000/=
13.	Procedure Book/PV Book and Delivery Book	30,000/=	30,000/=	-
14.	College Prospectus	20,000/=	20,000/=	20,000/=
15.	Two pairs of College Uniform (Gown, Shirts, and Trousers)	120,000/=	-	-
16.	Cost for Cleanliness	80,000/=	80,000/=	80,000/=
17.	Indexing Verification Fee	50,000/=	-	-
18.	Medical Examination	10,000/=	-	-
19.	Community Field Work/ Psychiatric Field Work	-	500,000/=	540,000/=
20.	Graduation Fee	-	-	50,000/=
	TOTAL	2,655,000/=	2,790,000/=	2,850,000/=

Fee Structure-Diploma in Medical Laboratory Tech 2022/23

S/N	ITEMS/PARTICULARS	Amount (THS)
		DIPLOMA (NTA L4)
1.	Registration Fees	30,000/=
2.	Tuition Fees	1,200,000/=
3.	ID Card	15,000/=
4.	Medical Expenses	55,000/=
5.	Caution money	50,000/=
6.	Condolence	60,000/=
7.	Stationeries, and Internal Examinations Fee	150,000/=
8.	Accommodation Expenses	450,000/=
9.	National Examination Fee (MoH)	150,000/=
10.	Sports, Attire and Facilities	100,000/=
11.	Internet Fee	80,000/=
12.	NACTE Quality Assurance Fee	15,000/=
13.	Clinical Coat (Part of Uniform)	50,000/=
14.	Practical Procedure Book	30,000/=
15.	Prospectus	20,000/=
16.	Two pairs of College Uniform (Gown, Shirts, and Trousers)	120,0000/=
17.	Cost for Cleanliness	80,000/=
18.	Medical Examination	10,000/=
	TOTAL COST NTA – L4	2,655,000/=

NB.

1. All students of **NTA Level 5** and **NTA Level 6** shall have Field work studies for a period not exceeding 30 days. NTA L-5 Field work shall be conducted in early first semester and NTA L-6 Field work shall be conducted at the beginning of semester two.
2. **Supplementary Examination Fee of 150,000/=** shall be paid once the students failed either **Continuous Assessment Tests or End of Semester Examinations**.

3. The college will provide meals (Breakfast, Lunch & Dinner) for both Campus and off campus Students valued TShs 5,000/= per day under individual arrangement (minimum).
4. Once Payments to the college has been made, no refund will be considered under any circumstances excluding withdrawing from college within stipulated time.

4.5 REGISTRATION PROCESS

At the beginning of the semester,

- i. Each student shall be registered and assigned a registration number before attending classes.
- ii. Registration is completed within the first week of the beginning of the semester. Any student found attending classes without registration shall be subjected to disciplinary process.
- iii. Registration of students is accompanied by providing identification cards to students showing that they are bonafide MCMS students.
- iv. No student shall be registered without showing proof of applicable fee payment.

5.0 ACADEMIC PROGRAMMES

5.1.0 DIPLOMA IN CLINICAL MEDICINE

5.1.1 INTRODUCTION

This is a competency based six-semester Diploma in clinical Medicine Programme. It intends to train health personnel capable of focusing on preventive, curative and rehabilitative health care.

5.1.2 AIMS OF THE PROGRAMME

The aims of this program are to achieve the following goals:

- 5.1.2.3** To form a flexible course that is responsive to dynamic and rapidly changing society;
- 5.1.2.3** To provide the skills, knowledge and behavior those are vital, meeting community and employer's needs;
- 5.1.2.4** To entice self-realization and team work skills that enable graduates to be employable and team players;
- 5.1.2.5** To build capacity to participate in the implementation of National Health Policy and its accompanying Operational Guidelines; and
- 5.1.2.6** To propagates and promotes moral, legal and ethical conduct among health workers within the national legal framework.

5.1.3 PROGRAMME OBJECTIVES

The Objectives of this program are as follows:

- 5.1.3.1** To apply basic principles of disease prevention and control.
- 5.1.3.2** To utilize principles of basic medical sciences in patient management.
- 5.1.3.3** To apply basic clinical and diagnostic laboratory procedures in management of patients.
- 5.1.3.4** To employ basic principles of record keeping in patient management.
- 5.1.3.5** To apply basic communication principles with clients, health professional colleagues and follow professional code of conduct.

5.1.3.6 To apply basic principles of clinical examination and diagnostic procedures to reach proper diagnosis.

5.1.3.7 To apply Information and Communication Technology (ICT) packages for effective health care delivery.

5.1.4 PROGRAMME DURATION

The whole program is divided into two semesters, Semester 1 and II. This program is intended to provide basic knowledge necessary for acquiring life-long learning and good foundation for further studies in clinical medicine.

DIPLOMA IN CLINICAL MEDICINE (CMT)

5.1.5 NTA Level 4 (CMT)

PROGRAMME DURATION

The whole program is divided into two semesters, Semester 1 and II. This program is intended to provide basic knowledge necessary for acquiring life-long learning and good foundation for further studies in clinical medicine.

Semester I

S/N	Module Code	Module Title	Class	Credit Hours
1.	CMT 04101	Communication Skills and customer care	Fundamental	6
2.	CMT 04102	Human Anatomy	Core	12
3.	CMT 04103	Human Physiology	Core	10
4.	CMT 04104	Epidemiology and Biostatistics	Core	13
5.	CMT 04105	Computer Applications	Core	7
6.	CMT 04106	Medical Ethics and Professionalism	Core	5
7.	CMT 04107	Microbiology, Parasitological and Entomology	Core	9
		TOTAL CREDITS		62

Semester II

S/N	ModuleCode	Module Title	Class	Credit Hours
1.	CMT 04208	Clinical Nutrition	Core	10
2.	CMT 04209	Clinical Skills	Core	15
3.	CMT 04210	Pathology	Core	12
4.	CMT 04211	Clinical laboratory	Core	10
5.	CMT 04212	Patient Care	Core	10
		TOTAL CREDITS		57

5.1.6 NTA Level 5 (CMT)

5.1.7 PROGRAMME DURATION

NTA Level 5 has a total of 44 weeks and is divided into two semesters; Semesters I and II, each semester consists of twenty (20) weeks for theoretical and practical training and two (2) weeks for end of semester examinations. NTA Level 5 is meant to build on what was learnt in NTA Level 4 and impart practical skills to enable students gain appropriate exposure and basic concepts in Clinical Medicine.

5.1.8 STUDY METHODS

The study methods and approaches include:

- **Lectures/ discussion**
- **Role plays**
- **Small group discussions**
- **Case studies**
- **Tutorials**
- **Assignments**
- **Practical training/ demonstration**
- **Laboratory/ ward attachment**
- **Study tours**
- **Community field work**

5.1.9 ELIGIBILITY TO SIT FOR END OF SEMESTER EXAMINATION

- 5.1.9.1** It is mandatory for every student to sit for end of semester examination, failure to do so without a genuine reason, shall lead to disqualification from the course.
- 5.1.9.2** Before a candidate is allowed to sit for end of semester examination, he/she must have a minimum of 90% attendance of theory and clinical sessions in a module as per class register.
- 5.1.9.3** A candidate who fails to meet a minimum of 90% attendance shall repeat a semester if was absent on acceptable grounds. In the case of unacceptable grounds, he/she shall be discontinued from the course.

5.1.10 ELIGIBILITY TO ENTER SEMESTER TWO

- 5.1.10.1** Any candidate who has a semester I GPA of 2.0 or above shall be allowed to continue to semester 2.
- 5.1.10.2** No GPA shall be computed to any student who has not completed a module(s) in a semester. Results will be withheld until he/she completes the same.
- 5.1.10.3** Any candidate who has a semester I GPA of 2.0 or above and he/she has failed any module will continue to semester 2 and do the supplementary examinations while in the second semester. The repeat of the failed examination must be done in 4 weeks from the 8 time of declaration of examination results. If he/she fails the supplementary examination will be suspended and repeat a semester when next offered. If he/she fails any module in the repeated semester will be discontinued from studies

5.1.11 EXAMINATION REGULATIONS

- 5.1.11.1** A candidate will be deemed to have passed the end of semester examination if he/she has achieved a minimum of 50% of the set marks for each theory and practical component.
- 5.1.11.2** A candidate who is unable to attempt end of semester examination for any module with evidence of a genuine reason(s), should inform the school authority in writing before the date of end of semester examination.
- 5.1.11.3** Any candidate who has a semester GPA of less than 2.0 shall be

discontinued from studies.

- 5.1.11.4** Any candidate who has a semester II GPA of 2.0 or above shall be allowed to continue to semester I of NTA level 5 provided he/she has not failed in any module.
- 5.1.11.5** Any candidate who has a semester I GPA of 2.0 or above but has failed in less than 50% of the module(s) allocated in a semester during the end of semester examinations shall be allowed to repeat the whole semester
- 5.1.11.6** Any candidate who has a semester I GPA of 2.0 or above but has failed in less than 50% of the module(s) during end of semester examinations shall be allowed to sit for supplementary examination of the failed module (s)
- 5.1.11.7** No candidate shall be allowed to sit for supplementary examinations more than once.
- 5.1.11.8** The supplementary examination of the failed module(s) must be done within four (4) weeks from the date of declaration of end-of-semester I examination results
- 5.1.11.9** Supplementary for end of semester II examinations shall be done eight (8) weeks from the date of declaration of end of semester II examination results.
- 5.1.11.10** No candidate shall be allowed to proceed to NTA level 5 until he/she has successfully passed end of semester II examination for all modules.
- 5.1.11.11** A candidate who fails in any of the supplemented module(s) shall be allowed to repeat the whole semester in the next academic year.
- 5.1.11.12** Any score after supplementary examination of the failed module shall be graded as '50%' irrespective of the pass mark attained. A candidate who did not do the end-of-semester examination(s) in the first sitting for genuine reasons and approved by the school authority, shall be regarded as having incomplete examination and shall be allowed to do the examination(s) when next offered.
- 5.1.11.13** A candidate who raises a genuine reason for postponing examinations just before or during end of semester examination shall communicate to the Principal of the training institution. The principal of the institution shall communicate with the institution academic committee/Board that

will authorize the postponement of the examination upon ascertaining the validity of submitted reasons. The candidate shall be allowed to sit for the examinations when next offered.

- 3.13.14** Any detected examination irregularities during the conduct of Continuous Assessment and end of semester examination shall be immediately reported in writing by the examiner/invigilator to the head of department/principal who shall take action according to the established rules and regulations.

5.1.12 EXAMINATION IRREGULARITIES

- 5.1.12.1** Any examination irregularity during the conduct of any examination shall immediately be reported in writing to the head of department/Principal and be submitted to the academic committee for decision.

- 5.1.12.2** The MoHSW shall be informed on the irregularities and action taken by the academic committee.

- 5.1.12.3** The action to the irregularities shall be as per general examination regulations as stipulated by the MoHSW.

5.1.13 SCORE RANGES AND GRADING SYSTEM

Marks will be awarded out of 100 percent. The marks so obtained from different assessment components will be clustered and graded as follows:

S/N	SCORE RANGE	GRADE	DEFINITION
1	80 – 100	A	Excellent
2	65 – 79	B	Good
3	50 – 64	C	Satisfactory
4	40- 49	D	Poor
5	0.0 – 39	F	Failure
6	-	I	Incomplete
7	0	Q	Disqualification

A score obtained after supplementary examination shall be graded according to the exact marks obtained.

5.1.14 GRADE POINTS FOR MODULE PERFORMANCE

Grades for the different score ranges are assigned points as follows:

Grades	A	B	C	D	F
Score	4	3	2	1	0

5.1.15 AWARD CLASSIFICATION

Following completion of all modules in a given semester the performance shall be computed to obtain Grade Points Average (GPA) achieved by the respective candidate. GPA shall be calculated at the end of each semester and when the candidate is liable for offer of award a cumulative GPA will be computed and awarded accordingly.

5.1.16 CLASS OF AWARDS

The Grade Point Average (GPA) computed from credits and grade weights shall be classified as shown below:

CLASS OF AWARD	CUMMULATIVE GPA
First class	3.5 - 4.0
Second class	3.0 – 3.4
Pass	2.0 – 2.9

5.1.17 DISPOSAL OF A FAILED CANDIDATE

5.1.17.1 Any candidate who is caught with any unauthorized materials (mobile phones, tablets, written documents and the likes) or cheating in the surrounding examination environment (in the examination room, toilets, outside the examination room) while the examination is in progress shall be **DISCONTINUED** from studies.

5.1.17.2 Any candidate who submits a forged or copied assignment or report shall be **DISCONTINUED** from studies.

5.1.17.3 A candidate who fails in more than 50% of modules taught in a semester during the Continuous Assessment Tests shall be **DISCONTINUED** from studies.

5.1.17.4 A student who fails end of semester examination with a GPA of less than 2.0 shall be **DISCONTINUED** from studies.

5.1.17.5 Any candidate who deliberately fails to attempt examination as provided in regulations without valid reason shall be **DISCONTINUED** from studies.

5.1.17.6 A candidate who will be proven guilty of not following instructions during conduction of examination shall be **DISCONTINUED** from studies

5.1.18 SUMMARY OF MODULES

Semester I

S/N	Module Code	Module Title	Class	Credit Hours
1.	CMT 05101	Clinical Pharmacology	Core	10
2.	CMT 05102	Internal Medicine I	Core	11
3.	CMT 05103	Paediatrics and Child Health I	Core	12
4.	CMT 05104	Obstetrics and Gynaecology I	Core	11
5.	CMT 05105	Health Promotion	Fundamental	10
	CMT 05106	Counselling	Fundamental	8
		TOTAL CREDITS		62

Semester II

S/N	Module Code	Module Title	Class	Credit Hours
1.	CMT05207	Reproductive and Child Health	Core	9
2.	CMT05208	Obstetrics and Gynaecology II	Core	12
3.	CMT05209	Surgery	Core	12
4.	CMT05210	Internal Medicine II	Core	12
5.	CMT05211	Paediatrics and Child Health II	Core	13
		TOTAL CREDITS		58

5.1.19 METHODS OF STUDY

The study methods and approaches which include:

- **Lecture discussion**
- **Small group discussion**
- **Case studies**
- **Role plays**
- **Tutorials**
- **Assignments**
- **Practical demonstration**
- **Laboratory/ward attachment**
- **Study tours.**

5.1.20 STUDENTS ASSESSMENT

This is a comprehensive system of measuring the achievement of the learning outcomes. It provides a yardstick for which the expected outcomes and benchmarking items are evaluated. This aspect has the following components:

5.1.20.1 Measuring performance.

5.1.20.2 Evaluating the achievement of the goal.

5.1.20.3 Ascertaining efficiency and adequacy of teaching and learning processes.

5.1.21 ASSESSMENT METHODS

The following assessment methods will be used:

5.1.21.1 Assignments

The objective of assignments is to reinforce the learning process by involving the participation of the students in finding the solution to a given question or problem which require decision making. They include tasks given to students apart from written tests and examination or projects, so as to enhance self-development. Assignments will be administered in a form of written work or practical exercises that are done individually or in a group.

5.1.21.2 Laboratory/Practical/Clinical examination

Practical/laboratory/Clinical examination is intended to allow the student to participate in undertaking a particular procedure individually. The learner should demonstrate the ability to take observation, carry out procedure and deduce results. It generally reinforces the learning process and develops the learners' practical ability.

5.1.21.3 Classroom Tests

The intention of classroom tests is to measure the theoretical ability of students and evaluate performance in written work. There will be a minimum of two written classroom test per each module during the semester, which will be supervised by the college tutor(s) for duration not less than two (2) hours.

5.1.22 ELIGIBILITY TO ENTER SEMESTER 2

5.1.22.1 Any candidate who has passed a semester examination shall be allowed to continue to the next semester

5.1.22.2 Any candidate who has Semester GPA of 2.0 or above and has failed less than 50% of the module during the end of Semester I Examination shall be allowed to continue to Semester II while waiting **for supplementary examination.**

5.1.22.3 GPA shall be recalculated for any student who sat for reseat examination after she/he has attempted the modules and cumulative result will be the criteria to award.

5.1.23 ELIGIBILITY TO SIT FOR END OF SEMESTER EXAMINATION

5.1.23.1 A candidate must have attained a minimum of 90% attendance of taught and practical class hours.

5.1.23.2 A candidate must have passed continuous assessment tests in all modules.

5.1.23.3 A candidate must have successfully performed all fundamental procedures stipulated in the practical procedure book. A candidate who fails to fulfill all stipulated procedures shall not be allowed to sit for end of semester examination.

2.23.4 The responsible training institution shall review students' practical procedure books and verify before allowing the student to enter the

end of semester examination.

2.23.5 For end of semester examinations that shall be administered by the MoHCDGEC, the team of external examiners will validate the verified candidates' practical procedure book before allowing them to sit for the end of semester examination.

2.23.6 A candidate should have an examination number and identification card provided by the respective training institutions and/or the MoHCDGEC

NTA Level 6 (CMT)

5.1.24 PROGRAMME DURATION

NTA Level 6 has a total of 44 weeks and is divided in two semesters; Semesters I and II, each semester consists of twenty (20) weeks for theoretical and practical training and two (2) weeks for end of semester examinations.

5.1.25 METHODS OF STUDY

The study methods and approaches which include:

- **Lecture discussions**
- **Tutorials**
- **Role plays**
- **Case studies**
- **Small group discussions**
- **Assignments**
- **Practical training/demonstration**
- **Laboratory/ward attachment**
- **Field attachment**
- **Study tours**
- **Simple operational research.**

5.1.26 ASSESSMENT OF STUDENTS

5.1.26.1 Assessment is an integral part of the learning process that supports and completes the learning strategies in order to achieve the required outcomes.

5.1.26.2 Assessment must reflect the required progression and be sensitive

to the range of key skills developed.

5.1.26.3 Assessment plan showing abilities and outcomes to be assessed will be developed by MOHSW and used by the Tanganyika Medical Training Board for standardization of examinations.

5.1.26.4 Assessment record and reporting system shall follow NACTE procedures to maintain assessment data, for purpose of feedback of assessment results and adherence to assessment regulations.

5.1.27 ASSESSMENT METHODS

The following assessment methods will be used:

5.1.27.1 Assignments

The object of assignments is to reinforce the learning process by involving the participation of the students in finding the solution to a given question or problem which require decision making. They include tasks given to student apart from written tests and examination or projects, so as to enhance self-development. Assignments may be administered in a form of written work or practical exercises that are done individually or in a group. For each module appropriate assessment methods and instruments will be indicated. Facilitators will decide on a convenient number of assignments for a given module in a semester. However, the number of assignments shall not be less than three (3) and should include both practical and theory.

5.1.27.2 Practical/clinical Tests

The intention of competence tests is to measure the practical/clinical capability of learners through actual doing of a particular task or skill. There will be a minimum of two (2) practical /clinical tests during the semester which will be supervised by institute tutors for duration of not less than two hours per test.

5.1.27.3 Classroom Tests/Examinations

The intention of classroom tests is to measure the theoretical ability of students and evaluate performance in written work. There will be a minimum of two (2) written classroom tests during the semester, which will be supervised by the institute tutor(s) for duration of not less than two (2) hours and not more than three (3) hours.

5.1.27.4 End of Module Examination

Theory and practical/clinical examination shall be conducted for a duration not exceeding three (3) hours, but not less than two (2) hours. It will be done at the end of the semester under supervision of external examiner and institute official supervisors.

5.1.27.5 Field Practical Training (FPT)

This is planned to take place at the beginning of second semester of this programme. Students should be attached at the health care facility with dental clinic. The Field attachment shall aim at exposing the learner to real working situation while improving clinical skills competencies. Field attachment should be 28 days.

5.1.28 MANAGEMENT OF ASSESSMENT

The mode of conduct and administration of assessment shall be those stipulate in this Curriculum and approved by NACTE and MOHSW.

5.1.29 ELIGIBILITY TO SIT FOR END OF SEMESTER EXAMINATION

5.1.29.1 It is mandatory that every student must sit for end of semester examination failure to do so he or she will be disqualified from the course.

5.1.29.2 Before a candidate is allowed to appear for end of semester examination must have a minimum of 90% of theory, clinical sessions and assignments in a module as per logbooks and class register.

5.1.29.3 A candidate who fails to meet a minimum of 90% attendance shall be allowed to repeat a semester or year if was absent on acceptable grounds. In the case of unacceptable grounds, he/she shall be discontinued from the course.

5.1.30 ELIGIBILITY TO ENTER SEMESTER TWO

5.1.30.1 Any candidate who has a semester I GPA of 2.0 or above shall be allowed to continue to semester 2

5.1.30.2 No GPA shall be computed to any student who has not completed a module(s) in a semester. Results will be withheld until he/she completes the same

5.1.30.3 Any candidate who has a semester I GPA of 2.0 or above and he/she has

failed any module will continue to semester 2 and do the supplementary examinations while in the second semester. The repeat of the failed examination must be done in 4 weeks from the time of declaration of examination results. If he/she fails the supplementary examination will be suspended and repeat a semester when next offered. If he/she fails any module in the repeated semester will be discontinued from studies.

- 5.1.31.4** The score of the supplementary examination shall be graded according to the actual scores the candidate obtained. GPA shall be recomputed for any student who sat for supplementary examinations. The Cumulative GPA shall be used to classify the class award achieved.

5.1.31 EXAMINATION REGULATIONS

- 5.1.31.1** A candidate who falls seriously sick just before or during end of semester examinations and is hospitalized will be allowed to write and or perform the examinations when next offered if his/her health has stabilized.

- 5.1.31.2** A candidate who raises a genuine reason for postponing examinations just before or during end of semester examination should be allowed to sit for special examination within four weeks after declaration of end semester examination.

5.1.32 EXAMINATION IRREGULARITIES

Any examination irregularities during the conduct of Continuous Assessment and end of semester examination shall be immediately reported in writing by the examiner/invigilator to the head of department who shall determine the appropriate course of action to be taken according to the circumstances and established rules and regulations.

5.1.33 SCORE RANGES AND GRADING SYSTEM

Marks will be awarded out of 100 per cent. The marks so obtained from different assessment components will be clustered and graded as follows:

S/N	SCORE RANGE	GRADE	DEFINITION
1	75 – 100	A	Excellent
2	70 - 74	B+	Very Good
3	65 – 69	B	Good
4	50 – 64	C	Satisfactory
5	40 – 49	D	Poor
6	0.0 – 39	F	Failure
7	-	I	Incomplete
8	0	Q	Disqualification

Grade points for module performance

Grades for the different score ranges are assigned points as follows:

Grades	A	B+	B	C	D	F
Score	5	4	3	2	1	0

5.1.34 AWARD CLASSIFICATION

An award shall be given to a student who satisfies the following conditions: a) She/he must have successfully completed all modules for which the award is to be made; and b) She/he has achieved the minimum cumulative Grade Point Average (GPA) equivalent to pass.

Following completion of all modules in a given semester the performance shall be computed to obtain Grade Points Average (GPA) achieved by the respective candidate. GPA shall be calculated at the end of each semester and when the candidate is liable for offer of award a cumulative GPA will be computed and awarded accordingly.

5.1.35 SEMESTER AND CUMULATIVE GPA CALCULATION

GPA shall be computed from grades achieved by students in each semester by combining results of CA and ES examinations.

5.1.36 CLASS OF AWARDS

The Grade Point Average (GPA) computed from credits and grade weights shall be classified as shown below:

Grade points for module performance

Grades for the different score ranges are assigned points as follows:

Grades	A	B+	B	C	D	F
Score	5	4	3	2	1	0

5.1.37 AWARD OF NTA LEVEL 6 GRADUATE

5.1.37.1 An award shall be given to a student who satisfies the following conditions:

5.1.37.2 Successful completion of all modules prescribed for the programme at a minimum of satisfactory grade “C”

5.1.37.3 Achievement of a minimum cumulative Grade Point Average (GPA) equivalent to a Pass.

CLASS OF AWARDS

The Grade Point Average (GPA) computed from credits and grade weights shall be classified as shown below:

CLASS OF AWARD	CUMMULATIVE GPA
First class	4.4 - 5.0
Upper Second class	3.5 - 4.3
Lower Second class	2.7 - 3.4
Pass	2.0 – 2.6

5.1.38 DISPOSAL OF A FAILED CANDIDATE

5.1.38.1 Any candidate who is caught with any unauthorized materials (mobile phones, tablets, written documents and the likes) or cheating in the surrounding examination environment (in the examination room, toilets, outside the examination room) while the examination is in progress shall be **DISCONTINUED** from studies.

5.1.38.2 Any candidate who submits a forged or plagiarized assignment or report shall be **DISCONTINUED** from studies.

5.1.38.3 A candidate who fails in more than 50% of modules taught in a semester during the Continuous Assessment Tests shall be **DISCONTINUED** from studies.

5.1.38.4 A student who fails end of semester examination with a GPA of less than 2.0 shall be **DISCONTINUED** from studies.

5.1.38.5 Any candidate who deliberately fails to attempt examination as provided in regulations without valid reason shall be **DISCONTINUED** from studies.

5.1.38.6 A candidate who will be proven guilty of not following instructions during conduction of examination shall be **DISCONTINUED** from studies.

5.1.39 DISTRICT HOSPITAL ATTACHMENTS

District Hospital Attachment	Scheme of Study (Hours per week)	Duration	Credits/ Semester
	35	4 weeks	14

5.1.40 SUMMARY OF MODULES

Semester I

S/N	Module Code	Module Title	Class	Credit Hours
1.	CMT 06101	Entrepreneurship and life skills	Fundamental	6
2.	CMT 06102	Leadership and Management	Fundamental	12
3.	CMT 06103	Operational Research	Fundamental	14
4.	CMT 06104	Basics of Forensic Medicine	Core	8
5.	CMT 06105	Surgical Specialties	Core	16
		TOTAL CREDITS		56

Semester II

S/N	Module Code	Module Title	Class	Credit Hours
1.	CMT 06206	Apprenticeship in Obstetrics and Gynaecology	Core	16
2.	CMT 06207	Apprenticeship in Surgery	Core	16
3.	CMT 06208	Apprenticeship in Internal Medicine	Core	16
4.	CMT 06209	Apprenticeship in Paediatrics and Child Health	Core	16
		TOTAL CREDITS		64

5.2.0 DIPLOMA IN CLINICAL DENTISTRY (CDT)

5.2.1 INTRODUCTION

This is a competency based six-semester Diploma in Clinical Dentistry Programme. It intends to train health personnel capable of focusing on preventive, curative and rehabilitative health care.



5.2.2 AIMS OF THE PROGRAMME

The aims of this program are to achieve the following goals:

- 5.2.2.1** To form a flexible course that is responsive to dynamic and rapidly changing society.
- 5.2.2.2** To provide the skills, knowledge and behaviors that are vital to the stakeholders and specifically to the employers and the community.
- 5.2.2.3** To entice self-realization and team work skills that enable graduates to be employable and team players.
- 5.2.2.4** To build capacity to participate in the implementation of National Health Policy and its accompanying Operational Guidelines linked to global initiatives.
- 5.2.2.5** To propagate and promote moral, legal and ethical conduct and professionalism among health workers within the national legal

framework and practice.

5.2.3 PROGRAMME OBJECTIVES

Objectives the main objectives of this programme are to:

5.2.3.1 Apply principles of diseases prevention and control to minimize burden of diseases in the community.

5.2.3.2 Utilize principles of basic bio-medical sciences in patient management.

5.2.3.3 Apply basic clinical and diagnostic laboratory procedures in management of patients.

5.2.3.4 Employ principles of record keeping in patient management.

5.2.3.5 Apply principles of communication with clients, health professional colleagues and follow professional code of conduct.

5.2.3.6 Apply principles of clinical examination and diagnostic procedures to reach correct diagnosis.

5.2.3.7 Apply ICT packages for effective oral health care delivery.

5.2.4 PROGRAMME DURATION

The whole programme has a total of 44 weeks of study in one academic year, which are divided in two semesters; each semester consists of twenty (20) weeks for theoretical and practical training and two (2) weeks for end of semester examinations. There are a total of 13 modules. This programme is intended to provide basic knowledge necessary for acquiring life-long learning and good foundation for further studies in clinical dentistry.

5.2.5 NTA Level 4 (CDT)

Summary of modules which are to be covered in semester one and two are as follows:

SUMMARY OF MODULES

Semester I

S/N	Module Code	Module Title	Class	Credit Hours
1.	CDT 04101	Infection prevention and Control	Core	
2.	CDT 04102	Communication and Counseling Skills	Fundamental	
3.	CDT 04103	General Anatomy & Physiology	Core	
4.	CDT 04104	Microbiology, immunology and Parasitology	Core	
5.	CDT 04105	Oral Anatomy and Physiology	Core	
		TOTAL CREDITS		

Semester II

S/N	Module Code	Module Title	Class	Credit Hours
1.	CDT 04106	Computer Applications	Fundamental	
2.	CDT 04107	Health Information Management and Financing	Fundamental	
3.	CDT 04108	Medical Ethics	Core	
4.	CDT 04209	Pathology	Core	
5.	CDT 04210	Environmental Health	Core	
6.	CDT 04211	Clinical laboratory	Core	
7.	CDT 04212	Patient Care and Clinical skills	Core	
		TOTAL CREDITS		

5.2.6 NTA Level 5 (CDT)

5.2.7 PROGRAMME DURATION

NTA Level 5 has a total of 47 weeks of study in one academic year and is divided in two semesters; semester 1 and II. All modules in this level are core modules. Semester I have 20 weeks for instructions (teaching and learning), 2 weeks for examinations and 3 weeks for community field work. Semester II has 20 weeks for instructions (teaching and learning) and 2 weeks for examinations. NTA Level 5 is meant to build on what was learnt in NTA Level 4 and impart practical skills to enable students gain appropriate exposure and basic concepts in Clinical Dentistry.

5.2.8 STUDY METHODS

The study methods and approaches include:

- **Lectures/discussion**
- **Role plays**
- **Small group discussions**
- **Case studies**
- **Tutorials**
- **Assignments**
- **Practical training/demonstration**
- **Laboratory/ward attachment**
- **Study tours**
- **Community field work**

5.2.9 ELIGIBILITY TO SIT FOR END OF SEMESTER EXAMINATION

5.2.9.1 A candidate must have attained a minimum of 90% attendance of taught and practical class hours.

5.2.9.2 A candidate must have passed continuous assessment tests in all modules.

5.2.9.3 A candidate must have successfully performed all fundamental procedures stipulated in the practical procedure book. A candidate who fails to fulfill all stipulated procedures shall not be allowed to sit for end of semester examination.

5.2.9.4 The responsible training institution shall review students' practical procedure books and verify before allowing the student to enter the end of semester examination.

5.2.9.5 For end of semester examinations that shall be administered by the MoHCDGEC, the team of external examiners will validate the verified candidates' practical procedure book before allowing them to sit for the end of semester examination.

5.2.9.6 A candidate should have an examination number and identification card provided by the respective training institutions and/or the MoHCDGEC.

5.2.10 ELIGIBILITY TO ENTER SEMESTER 2

5.2.10.1 Any candidate who has passed a semester examination shall be allowed to continue for the next semester.

5.2.10.2 Any candidate who has Semester GPA of 2.0 or above and has failed less than 50% of the module during the end of Semester I Examination shall be allowed to continue to Semester II while waiting for supplementary examination.

5.2.11 EXAMINATION REGULATIONS

5.2.11.1 A candidate will be deemed to have passed the end of semester examination if he/she has achieved a minimum of 50% of the set marks for each theory and practical component.

5.2.11.2 A candidate who is unable to attempt end of semester examination for any module with evidence of a genuine reason(s), should inform the school authority in writing before the date of end of semester examination.

5.2.11.3 Any candidate who has a semester GPA of less than 2.0 shall be discontinued from studies.

5.2.11.4 Any candidate who has a semester II GPA of 2.0 or above shall be allowed to continue to semester I of NTA level 5 provided he/she has not failed in any module.

5.2.11.5 Any candidate who has a semester I GPA of 2.0 or above but has failed in less than 50% of the module(s) allocated in a semester during the end of semester examinations shall be allowed to repeat the whole semester.

- 5.2.11.6** Any candidate who has a semester I GPA of 2.0 or above but has failed in less than 50% of the module(s) during end of semester examinations shall be allowed to sit for supplementary examination of the failed module (s).
- 5.2.11.7** No candidate shall be allowed to sit for supplementary examinations more than once.
- 5.2.11.8** The supplementary examination of the failed module(s) must be done within four (4) weeks from the date of declaration of end-of-semester I examination results.
- 5.2.11.9** Supplementary for end of semester II examinations shall be done eight (8) weeks from the date of declaration of end of semester II examination results.
- 5.2.11.10** No candidate shall be allowed to proceed to NTA level 5 until he/she has successfully passed end of semester II examination for all modules.
- 5.2.11.11** A candidate who fails in any of the supplemented module(s) shall be allowed to repeat the whole semester in the next academic year.
- 5.2.11.12** Any score after supplementary examination of the failed module shall be graded as '50%' irrespective of the pass mark attained. A candidate who did not do the end-of-semester examination(s) in the first sitting for genuine reasons and approved by the school authority, shall be regarded as having incomplete examination and shall be allowed to do the examination(s) when next offered.
- 5.2.11.13** A candidate who raises a genuine reason for postponing examinations just before or during end of semester examination shall communicate to the Principal of the training institution. The principal of the institution shall communicate with the institution academic committee/Board that will authorize the postponement of the examination upon ascertaining the validity of submitted reasons. The candidate shall be allowed to sit for the examinations when next offered.
- 5.2.11.14** Any detected examination irregularities during the conduct of Continuous Assessment and end of semester examination shall be immediately reported in writing by the examiner/invigilator to the head of department/principal who shall take action according to the established rules and regulations.

5.2.12 EXAMINATION IRREGULARITIES

5.2.12.1 Any detected examination irregularities during the conduct of Continuous Assessment and end of semester examination shall immediately be reported in writing by the examiner/invigilator to the head of department/principal who shall determine the appropriate course of action to be taken according to the circumstances and established rules and regulations.

5.2.12.2 Examinations irregularities include possession of the following unauthorized materials: papers, written notes, on part or body of the paper, books, electronic gadgets that can transmit information during examination or test.

5.2.13 SCORE RANGES AND GRADING SYSTEM

Marks will be awarded out of 100 percent. The marks so obtained from different assessment components will be clustered and graded as follows:

S/N	SCORE RANGE	GRADE	DEFINITION
1	80 – 100	A	Excellent
2	65 – 79	B	Good
3	50 – 64	C	Satisfactory
4	40- 49	D	Poor
5	0.0 – 39	F	Failure
6	-	I	Incomplete
7	0	Q	Disqualification

5.2.14 GRADE POINTS FOR MODULE PERFORMANCE

Grades for the different score ranges are assigned points as follows:

Grades	A	B	C	D	F
Score	4	3	2	1	0

5.2.15 AWARD CLASSIFICATION

Following completion of all modules in a given semester the performance shall be computed to obtain Grade Points Average (GPA) achieved by the respective candidate. GPA shall be calculated at the end of each semester and when the candidate is liable for offer of award a cumulative GPA will be computed and

awarded accordingly.

5.2.16 CLASS OF AWARDS

The Grade Point Average (GPA) computed from credits and grade weights shall be classified as shown below:

CLASS OF AWARD	CUMMULATIVE GPA
First Class	3.5 - 4.0
Second Class	3.0 – 3.4
Pass	2.0 – 2.9

5.2.17 DISPOSAL OF A FAILED CANDIDATE

5.2.17.1 Any candidate who is caught with any unauthorized materials (mobile phones, tablets, written documents and the likes) or cheating in the surrounding examination environment (in the examination room, toilets, outside the examination room) while the examination is in progress shall be **DISCONTINUED** from studies.

5.2.17.2 Any candidate who submits a forged or copied assignment or report shall be **DISCONTINUED** from studies.

5.2.17.3 A candidate who fails in more than 50% of modules taught in a semester during the Continuous Assessment Tests shall be **DISCONTINUED** from studies.

5.2.17.4 A student who fails end of semester examination with a GPA of less than 2.0 shall be **DISCONTINUED** from studies.

5.2.17.5 Any candidate who deliberately fails to attempt examination as provided in regulations without valid reason shall be **DISCONTINUED** from studies.

5.2.17.6 A candidate who will be proven guilty of not following instructions during conduction of examination shall be **DISCONTINUED** from studies.

5.2.18 SUMMARY OF MODULES

Semester I

S/N	ModuleCode	Module Title	Class	Credit Hours
1.	CDT 05101	Medicine	Core	
2.	CDT 05102	Surgery	Core	
3.	CDT 05103	Pharmacology and Pharmacy	Core	
4.	CDT 05104	Nutrition	Core	
5.	CDT 05105	Communicable Diseases	Core	
		TOTAL CREDITS		

Semester II

S/N	Module Code	Module Title	Class	Credit Hours
1.	CDT 05206	Oral surgery	Core	
2.	CDT 05207	Cariology and Periodontology	Core	
3.	CDT 05208	Epidemiology & Biostatistics	Core	
4.	CDT 05209	Community Dentistry	Core	
		TOTAL CREDITS		

5.2.19 METHODS OF STUDY

The study methods and approaches which include:

- **Lecture discussion**
- **Small group discussion**
- **Case studies**
- **Role plays**
- **Tutorials**
- **Assignments**
- **Practical demonstration**
- **Laboratory/ward attachment**
- **Study tours.**

5.2.20 STUDENTS ASSESSMENT

This is a comprehensive system of measuring the achievement of the learning outcomes. It provides a yardstick for which the expected outcomes and benchmarking items are evaluated. This aspect has the following components:

- 5.2.20.1** Measuring performance.
- 5.2.20.2** Evaluating the achievement of the goal.
- 5.2.20.3** Ascertaining efficiency and adequacy of teaching and learning processes.

5.2.21 ASSESSMENT METHODS

The following assessment methods will be used:

5.2.21.1 Assignments

The objective of assignments is to reinforce the learning process by involving the participation of the students in finding the solution to a given question or problem which require decision making. They include tasks given to students apart from written tests and examination or projects, so as to enhance self development. Assignments will be administered in a form of written work or practical exercises that are done individually or in a group.

5.2.21.2 Laboratory /Practical/Clinical examination

Practical/laboratory/Clinical examination is intended to allow the student to participate in undertaking a particular procedure individually. The learner should demonstrate the ability to take observation, carry out procedure and deduce results. It generally reinforces the learning process and develops the learners' practical ability.

5.2.21.3 Classroom Tests

The intention of classroom tests is to measure the theoretical ability of students and evaluate performance in written work. There will be a minimum of two written classroom test per each module during the semester, which will be supervised by the college tutor(s) for duration not less than two (2) hours.

5.2.22 ELIGIBILITY TO ENTER SEMESTER TWO

- 5.2.22.1** Any candidate who has passed a semester examination shall be allowed to continue to the next semester.
- 5.2.22.2** Any candidate who has Semester GPA of 2.0 or above and has failed less than 50% of the module during the end of Semester I Examination shall be allowed to continue to Semester II while waiting for supplementary examination.
- 5.2.22.3** GPA shall be recalculated for any student who sat for reseat examination after she/he has attempted the modules and cumulative result will be the criteria to award.

5.2.23 ELIGIBILITY TO SIT FOR END OF SEMESTER EXAMINATION

- 5.2.23.1** A candidate must have attained a minimum of 90% attendance of taught and practical class hours.
- 5.2.23.2** A candidate must have passed continuous assessment tests in all modules.
- 5.2.23.3** A candidate must have successfully performed all fundamental procedures stipulated in the practical procedure book. A candidate who fails to fulfill all stipulated procedures shall not be allowed to sit for end of semester examination.
- 5.2.23.4** The responsible training institution shall review students' practical procedure books and verify before allowing the student to enter the end of semester examination.
- 5.2.23.5** For end of semester examinations that shall be administered by the MoHCDGEC, the team of external examiners will validate the verified candidates' practical procedure book before allowing them to sit for the end of semester examination.
- 5.2.23.6** A candidate should have an examination number and identification card provided by the respective training institutions and/or the MoHCDGEC.

NTA Level 6 (CDT)

5.2.24 PROGRAMME DURATION

This programme has a total of forty-eight (48) weeks of study that are spread over two semesters. Semester I have a total of 26 weeks, of which 20 weeks are set for class study and clinical practice, 2 weeks for End-of-Semester examination, and 4 weeks for fieldwork attachment. Semester II has a total of 22 weeks, of which 20 weeks are allocated for class study and clinical practice and 2 weeks for End of Semester Examinations.

5.2.25 METHODS OF STUDY

The study methods and approaches which include:

- **Lecture discussions**
- **Tutorials**
- **Role plays**
- **Case studies**
- **Small group discussions**
- **Assignments**
- **Practical training/demonstration**
- **Laboratory/ward attachment**
- **Field attachment**
- **Study tours**
- **Simple operational research**

5.2.26 ASSESSMENT OF STUDENTS

The objective of assessment is to set a comprehensive system of measuring the achievement of the learning outcomes. It provides a yardstick for which the expected outcomes and benchmarking items are evaluated. This aspect has two major components, one for measuring performance and achievement while the other is for evaluating the achievement of the goal as well as ascertaining whether the teaching and learning processes are efficiently and adequately attained.

5.2.27 ASSESSMENT METHODS

The following assessment methods will be used:

5.2.27.1 Assignments

The objective of assignments is to reinforce the learning process by involving the participation of the students in finding the solution to a given question or problem which require decision-making. They include tasks given to students apart from written tests and examination or projects, so as to enhance self-development. Assignments may be administered in a form of written work or practical exercises that are done individually or in a group.

5.2.27.2 Operational Research

One operational research shall be undertaken within the programme. It carries 10 credits. The research shall be assessed in the following format:

5.2.27.2.1 Oral presentation (viva voce)

5.2.27.2.2 Written work

5.2.27.3 District Hospital fieldwork assignment

Is planned to take place at the end of semester one of this programme and shall be conducted in District Hospitals; it carries 14 credits. The assignment shall be assessed in the following format:

5.2.27.3.1 Oral presentation (viva voce)

5.2.27.3.2 Written report

5.2.27.4 Report for each rotation

5.2.27.5 General individual report

5.2.27.6 Laboratory/practical Work /Clinical examination.

Practical/laboratory/Clinical examination is intended to allow the student to participate in undertaking a particular process individually or in groups. The learner should demonstrate the ability to take observation, carry out procedures and deduce results. It generally reinforces the learning process and develops the learners' practical ability. There will be a minimum of two practical/clinical examinations per each module during the semester for each completed module.

5.2.27.7 Classroom Tests/Examinations.

The intention of classroom tests and examinations is to measure the theoretical ability of students and evaluate performance in written work. There will be a minimum of two written classroom test/examinations per each module during the semester for each completed module, which will be supervised by the college tutor(s) for duration not less than two (2) hours.

5.2.28 MANAGEMENT OF ASSESSMENT

This will be done by:

5.2.28.1 Continuous assessment Test (CAT) and End of module/Semester examination. End of module examination shall be conducted during the end of semester. The examination shall be conducted for duration not exceeding 2½ hours (excluding practical examinations), but not less than two (2) hours. It will be done under supervision.

5.2.28.2 CAT shall contribute 40% and semester examination 60% to final grade.

5.2.29 ELIGIBILITY TO SIT FOR END OF SEMESTER EXAMINATION

It is mandatory that every student must sit for semester examination. The following conditions must be fulfilled for a candidate to be allowed to sit for end of semester examinations:

5.2.29.1 A candidate must have attained a minimum of 90% attendance of taught and practical class hours.

5.2.29.2 A candidate must have passed continuous assessment tests in all modules.

5.2.29.3 A candidate must have successfully performed all fundamental procedures stipulated in the practical procedure book. A candidate who fails to fulfill all stipulated procedures shall not be allowed to sit for end of semester examination.

5.2.29.4 The responsible training institution shall review students' practical procedure books and verify before allowing the student to enter the end of semester examination.

5.2.29.5 For end of semester examinations that shall be administered by the MoHCDGEC, the team of external examiners will validate the verified candidates' practical procedure books before allowing them to sit for

the end of semester examination.

- 5.2.29.6** A candidate should have an examination number and identification card provided by the respective training institutions and/or the MoHCDGEC.

5.2.30 ELIGIBILITY TO ENTER SEMESTER TWO

- 5.2.30.1** Any candidate who has passed a semester examination shall be allowed to continue to the next semester.
- 5.2.30.2** Any candidate who has Semester GPA of 2.0 or above and has failed less than 50% of the module during the end of Semester I Examination shall be allowed to continue to Semester II while waiting for supplementary examination.

5.2.31 EXAMINATION REGULATIONS

- 5.2.31.1** A candidate who falls seriously sick just before or during end of semester examinations and is hospitalized will be allowed to write and or perform the examinations when next offered if his/her health has stabilized.
- 5.2.31.2** A candidate who raises a genuine reason for postponing examinations just before or during end of semester examination should be allowed to sit for special examination within four weeks after declaration of end semester examination.

5.2.32 EXAMINATION IRREGULARITIES

Any examination irregularities during the conduct of Continuous Assessment and end of semester examination shall be immediately reported in writing by the examiner/invigilator to the head of department who shall determine the appropriate course of action to be taken according to the circumstances and established rules and regulations.

5.2.33 SCORE RANGES AND GRADING SYSTEM

Marks will be awarded out of 100 per cent. The marks so obtained from different assessment components will be clustered and graded as follows:

S/N	SCORE RANGE	GRADE	DEFINITION
1	75 – 100	A	Excellent
2	70 - 74	B+	Very Good
3	65 – 69	B	Good
4	50 – 64	C	Satisfactory
5	40 – 49	D	Poor
6	0.0 – 39	F	Failure
7	-	I	Incomplete
8	0	Q	Disqualification

Grade points for module performance

Grades for the different score ranges are assigned points as follows:

Grades	A	B+	B	C	D	F
Score	5	4	3	2	1	0

5.2.34 AWARD CLASSIFICATION

Following completion of all modules in a given semester the

Performance shall be computed to obtain Grade Points Average (GPA) achieved by the respective candidate. GPA shall be calculated at the end of each semester and when the candidate is liable for offer of award a cumulative GPA will be computed and awarded accordingly.

5.2.35 SEMESTER AND CUMULATIVE GPA CALCULATION

GPA shall be computed from grades achieved by students in each semester by combining results of CA and ES examinations.

5.2.36 CLASS OF AWARDS

The Grade Point Average (GPA) computed from credits and grade weights shall be classified as shown below:

CLASS OF AWARD	CUMMULATIVE GPA
First class	4.4 - 5.0
Upper Second class	3.5 - 4.3
Lower Second class	2.7 - 3.4
Pass	2.0 – 2.6

5.2.37 AWARD OF NTA LEVEL 6 GRADUATE

An award shall be given to a student who satisfies the following conditions.

5.2.37.1 Successful completion of all modules prescribed for the programme at a minimum of satisfactory grade “C”

5.2.37.2 Achievement of a minimum cumulative Grade Point Average (GPA) equivalent to a Pass.

5.2.38 DISPOSAL OF A FAILED CANDIDATE

5.2.38.1 Any candidate who is caught with any unauthorized materials (mobile phones, tablets, written documents and the likes) or cheating in the surrounding examination environment (in the examination room, toilets, outside the examination room) while the examination is in progress shall be **DISCONTINUED** from studies.

5.2.38.2 Any candidate who submits a forged or plagiarized assignment or report shall be **DISCONTINUED** from studies.

5.2.38.3 A candidate who fails in more than 50% of modules taught in a semester during the Continuous Assessment Tests shall be **DISCONTINUED** from studies.

5.2.38.4 A student who fails end of semester examination with a GPA of less than 2.0 shall be **DISCONTINUED** from studies.

5.2.38.5 Any candidate who deliberately fails to attempt examination as provided in regulations without valid reason shall be **DISCONTINUED** from studies.

5.2.38.6 A candidate who will be proven guilty of not following instructions during conduction of examination shall be **DISCONTINUED** from studies.

5.2.39 DISTRICT HOSPITAL ATTACHMENTS

District Hospital Attachment	Scheme of Study (Hours per week)	Duration	Credits/ Semester
	35	4 weeks	14

5.2.40 SUMMARY OF MODULES

Semester I

S/N	Module Code	Module Title	Class	Credit Hours
1.	CDT 06101	Oral Surgery and Medicine	Core	
2.	CDT 06102	Operative Dentistry	Core	
3.	CDT 06103	Computer Applications II	Fundamental	
4.	CDT 06104	Operational Research	Fundamental	
5.	CDT 06105	Health Management and Health Policy	Core	
		TOTAL CREDITS		

Semester II

S/N	Module Code	Module Title	Class	Credit Hours
1.	CDT 06206	Apprenticeship in Oral Surgery	Core	
2.	CDT 06207	Professionalism	Core	
3.	CDT 06208	Apprenticeship in Operative Dentistry	Core	
4.	CDT 06209	Entrepreneurship in Health	Fundamental	
5.	CDT06210	Pedodontics and Preventive dentistry	Core	
6	CDT 06211	Field work Practice	Core	
		TOTAL CREDITS		

5.3.0 DIPLOMA IN NURSING AND MIDWIFERY (NMT)

5.3.1 INTRODUCTION

This is the pre-service Ordinary Diploma in Nursing, designed and organized in six semesters, each with specified courses. The program is geared towards producing innovative, creative and flexible nurses who will cope with dynamic changes in the profession, technology and socioeconomic needs so as to be able to render comprehensive, quality and cost-effective nursing care that meets the health needs of Tanzanians in military and the community at large.



5.3.2 AIMS OF THE PROGRAMME

The program aims to achieve the following goals:

- 5.3.1** To form a flexible course that is responsive to dynamic and rapidly changing world of work and the society;
- 5.3.2** To provide nursing skills, knowledge and behaviors that is vital to learners, employers and the community;
- 5.3.3** To entice self-realization and team work skills that enable graduates to perform efficiently and aspire for higher level training;
- 5.3.4** To build capacity to participate in the implementation of National Health Policy and its accompanying Operational Guidelines;

- 5.3.5** To propagate and promote moral, legal and ethical conduct among nurses and other health workers within the nursing profession and national legal framework; and
- 5.3.6** To promote entrepreneurship knowledge and skills among learners.

5.3.3 OBJECTIVES

The objectives of this program are to:

- 5.3.3.1** Form a career ladder in nursing profession practice, career advancement and a more advanced primary role for nursing management in health care service delivery;
- 5.3.3.2** Impart appropriate basic knowledge, skills and attitudes relevant to nursing practice in relation to reproductive, preventive and curative health care services in the community;
- 5.3.3.3** Steer creativity and innovativeness in response to challenges inherent in nursing practice and health care delivery;
- 5.3.3.4** Inculcate a culture of teamwork and build critical thinking and problem-solving skills in nursing and health care practice;
- 5.3.3.5** Promote a good sense of citizenship, accountability and responsibility to graduates;
- 5.3.3.6** Stimulate life-long learning behavior for nurses and advancement of nursing profession;
- 5.3.3.7** Provide an international outlook of the learning content and context so as to widen learners' advantages into regional and international labor markets.

5.3.4 PROGRAM DURATION

The program duration is 3 consecutive years with two semesters per year which makes a total of six semesters for the whole course.

5.3.5 ASSESSMENT METHODS

The following assessment methods will be used:

5.3.5.1 Assignments

The aim of assignments is to reinforce the learning process by involving the participation of the students in finding the solution to a given question or problem which require decision-making so as to enhance self-development. Assignments may be administered in a form of written work or practical exercises that are done individually or in a group.

5.3.5.2 Skills Laboratory/Demonstration Work

The college has excellent skills lab which enable students to carry out or exercise varieties of procedures before clinical placement. The learner should demonstrate the ability to take observations and carry out basic nursing procedures before being allowed to handle patient directly. The learner should be assessed whether she/he has gained adequate skills in the laboratory before being allowed to practice in the clinical setting directly on patients. It generally reinforces the learning process and develops the learners' practical abilities.

5.3.5.3 Continuous Assessment

There will be a minimum of one written test for each module during a semester and where applicable to have one practical test. The intention of continuous assessment is to measure the theoretical ability and practical performance of students.

5.3.5.4 End of Semester Examinations

There shall be end of semester examination for each module, which shall be conducted for duration not exceeding three (3) hours but not less than two (2) hours. Practical examinations shall be conducted within a period of one hour, whereby 40 minutes will cover practical and 20 minutes will be for oral examination and evaluation.

5.3.5.5 Community Field Practice

Community field practice shall be conducted during the NTA LEVEL 5 first semester. The field practice shall be assessed by oral presentation and a report to be submitted by each student.

5.3.5.6 Clinical Practice

Clinical practice will take place at Lugalo General Military Hospital which is an institution teaching hospital. Where necessary other health facilities will be used. Clinical practice will take place throughout the course of study as per curriculum

requirements. Clinical practice will be monitored and assessed through the use of Record of Practical Instructions and Experience Books and Midwifery Case Register. In addition, oral presentations and demonstrations will be used to build and assess students' acquisition of practical competences and appropriate attitudes.

5.3.6 REGULATIONS FOR EXAMINATIONS/MANAGEMENT OF ASSESSMENT

The management of assessment and its mode of conduct shall abide to rules and regulations stipulated and approved by the MoHCDGEC, Tanzania Nurses and Midwives Council (TNMC) and NACTE.

5.3.7 END OF SEMESTER EXAMINATIONS

- 5.3.7.1** Each module taught in a semester will be examined separately at the end of semester.
- 5.3.7.2** A candidate will be eligible for the end of semester examination if she/he has successfully passed continuous assessments for each module.
- 5.3.7.3** A student who fails to attain 50% of continuous assessment for each core modules shall not be allowed to sit for semester examination. All modules are regarded as core module with the exception of computer applications and entrepreneurship modules
- 5.3.7.4** A student who did not sit for the semester examination for any module, shall have to do the examination for that module before progressing towards next semester.
- 5.3.7.5** A student who attains GPA of 2.0 should be allowed to supplement the failed module once not later than four weeks
- 5.3.7.6** A student who fails semester examination with GPA less than 2.0 should be discontinued from the program.
- 5.3.7.7** A student who fails any core module after supplementary in NTA Level 4 shall be discontinued.
- 5.3.7.8** Any score after supplementary shall be counted at 50% regardless the actual score
- 5.3.7.9** A student who fails the semester examination for any core module after repeating shall be suspended and reinstated into the program at the

start of the next semester.

5.3.7.10 A student who fails the theory or practical examination for any module will be allowed to sit for supplementary examination not later than 4 weeks after the first attempt.

5.3.7.11 A student who fails supplementary examination for any module shall be suspended and allowed to repeat the semester.

5.3.7.12 Students will be allowed to progress towards the next semester if she/ he has passed all semester examinations for each module.

5.3.7.13 A candidate who falls seriously sick just before or during end of semester examinations or is hospitalized will be allowed to carry out the examinations when his/her health has stabilized.

5.3.7.14 A candidate who feels unable to attempt end of semester examination for any module for any reason, should present her case in writing four weeks before the date of end of semester examination to the head of an institution for consideration

5.3.7.15 A candidate will be deemed to have passed the end of semester examination if she/he achieves a minimum 50% of the set marks for both theory and oral/practical or the aggregates of continuous assessment and end of semester examination for each core module.

5.3.8 FINAL QUALIFYING EXAMINATION

5.3.8.1 A candidate will be eligible for the final qualifying examination if she/he has successfully completed the total program of studies.

5.3.8.2 A candidate who falls sick just before or during the examination, will be allowed to carry out the examination in the sick bay/ hospital under supervision, if he/she is not seriously sick.

5.3.8.3 A candidate, who falls seriously sick just before or during the examination and is hospitalized, will be allowed to write the examination when next offered.

5.3.8.4 A finalist candidate who feels unable or is not yet ready to attempt a final examination for any reason, should present his/her case in writing to the principal of the school four weeks before the date of the final examination and will be allowed to attempt the examination when it is next offered.

5.3.9 PASSING THE FINAL EXAMINATION

- 5.3.9.1** A candidate will be deemed to have passed the final examination if she/he attains a minimum of 50% of the set marks for both theory and oral practical or the aggregate of continuous assessment.
- 5.3.9.2** A candidate who fails the final examination will be allowed to re-sit or supplement the failed subject during the next schedule (6 months) of the examination regardless of the number of subject failed.
- 5.3.9.3** A candidate who fails after the second attempt of the examination will be allowed to repeat a year.
- 5.3.9.4** A candidate who fails the final examination will be allowed to sit for supplementary examination two times only.

5.3.10 EXAMINATION COMPONENTS CONTRIBUTION

Contribution of every component of the assessment to the final mark shall include 45% continuous assessment and 55% End of semester examination making a total of 100%.

5.3.11 EXAMINATION APPEALS

The appeal of candidates, who have not satisfied the examiners, should follow the process described in the training regulation of the MoHCDGEC.

5.3.12 SCORE RANGES AND GRADING SYSTEM

- 5.3.12.1** Marks will be awarded out of 100 percent. The marks so obtained from different assessment components will be clustered and graded according to grading system by the MoHCDGEC, TNMC and NACTE as follows:

S/N	SCORE RANGE	GRADE	DEFINITION
1.	75 – 100	A	Excellent
2.	70 – 74	B+	Very good
3.	60 – 69	B	Good
4.	50 – 59	C	Satisfactory
5.	0 – 49	F	Failure
6.	–	I	Incomplete
7.	0	Q	Disqualification

5.3.13 AWARD CLASSIFICATION

5.3.13.1 Grades for the different score ranges are assigned points as follows:

Grades	A	B+	B	C	F
Score	5	4	3	2	0

5.3.13.2 The Grade Point Average (GPA) shall be computed from credits and grade weights and classified as follows:

CLASS OF AWARD	CUMMULATIVE GPA
First class	4.4 - 5.0
Upper Second class	3.5 - 4.3
Lower Second class	2.7 - 3.4
Pass	2.0 - 2.6

5.3.13.3 Students shall be declared qualified after successful completion of all modules prescribed for each level.

5.3.13.4 Achievement of a minimum cumulative Grade Point Average (GPA) equivalent to a pass.

5.3.13.5 GPA shall be computed from grades achieved by students using the NACTE guidelines.

5.3.14 TRAINING REGULATIONS

5.3.14.1 Entry requirements

The student who has been selected to join the course of studies to school of nursing should report within not more than 15 days after the commencement of

the study.

5.3.14.2 Discontinuation from training

Any student who interrupts the training at any time or is absent for a continuous period of 20 days within a semester excluding day offs and EDs will be discontinued.

5.3.14.3 Period of absence

Any student who interrupts the training at any time or is absent due to sickness for a total of 20 days within a semester may be allowed to repeat a semester.

5.3.14.4 Conduct and behavior

Any student who is admitted in schools of nursing should have good adherence to the school regulations approved by MoHCDGEC/TNMC.

5.3.15 SUMMARY OF PROGRAMME MODULES

NTA L4 (NMT)

Semester I

S/N	Module Code	Module Title	Class	Credit Hours
1.	NMT 04101	Infection Prevention and Control	Core	15
2.	NMT 04102	Infection Prevention and Control	Core	1
3.	NMT 04103	Human Anatomy and Physiology	Core	14
4.	NMT 04104	Basic Computer Application	Fundamental	6
5.	NMT 04105	Communication Skills	Fundamental	10
6.	NMT 04106	Parasitology and Entomology	Core	5
		TOTAL CREDITS		51

Semester II

S/N	Module Code	Module Title	Class	Credit Hours
1.	NMT 04207	Application of Nursing process and theories in nursing care	Core	12
2.	NMT 04208	Basic Clinical Nursing	Core	20
3.	NMT 04209	Basic Pharmacology	Core	10
4.	NMT 04210	Basics of Health Information Management	Core	4
5.	NMT 04211	Disaster and Emergency preparedness	Core	13
6.	NMT 04212	Entrepreneurship	Fundamental	3
		TOTAL CREDITS		62

NTA L5 (NMT)

PROGRAMME MODULES

Semester I

S/N	ModuleCode	Module Title	Class	Credit Hours
1.	NMT 05101	Reproductive Health Care	Core	0.5
2.	NMT 05102	Child Health Services	Core	0.5
3.	NMT 05103	Care of a Sick Child	Core	1
4.	NMT 05104	Basic Care of Patient with Medical Conditions	Core	2
5.	NMT 05105	Basic Care of Patient with Surgical Conditions	Core	1.5
6.	NMT 05106	Basics of Mental Health Nursing	Core	1.5
7.	NMT 05107	Care of a Woman During Antenatal Period	Core	0.5
		TOTAL CREDITS		7.5

Semester II

S/N	Module Code	Module Title	Class	Credit Hours
1.	NMT 05208	Care of a Woman in Normal Labour and Puerperium	Core	15
2.	NMT 05209	Pre Referral Management of a Woman with Abnormal Pregnancy Labour and Puerperium	Core	2
3.	NMT 05210	Care of a Normal New Born	Core	6
4.	NMT 05211	Management of Communicable Diseases	Core	20
5.	NMT 05212	Community Health Nursing	Core	20
TOTAL CREDITS				63

NTA L6 (NMT)

PROGRAMME MODULES

Semester I

S/N	Module Code	Module Title	Class	Credit Hours
1.	NMT 06101	Care of a Woman with Abnormal Pregnancy, Labour and Puerperium	Core	19
2.	NMT 06102	Care of a Woman with Obstetric Emergency conditions	Core	6
3.	NMT 06103	Care of Newborns with Abnormal Conditions	Core	5
4.	NMT 06104	Supervision in Nursing and Midwifery Practice	Core	12
5.	NMT 06105	Basics of Epidemiology and Biostatistics	Core	6
6.	NMT 06106	Fundamentals of Research	Fundamental	9

		TOTAL CREDITS		57
--	--	----------------------	--	-----------

Semester II

S/N	ModuleCode	Module Title	Class	Credit Hours
1.	NMT 06207	Care of Patients with Medical Conditions	Fundamental	20
2.	NMT 06208	Care of Patients with Tumors and Cancer	Core	4
3.	NMT 06209	Care of Patients with Surgical Conditions	Core	14
4.	NMT 06210	Care of Patients with Reproductive Surgical Conditions	Core	5
5.	NMT 06211	Mental Health Nursing	Core	20
		TOTAL CREDITS		63

5.3.16 AWARD

Upon successful completion of the programme a graduate will be awarded a certificate of Ordinary Diploma in Nursing offered by the MoHCDGEC/ TNMC.

5.4.0 DIPLOMA IN MEDICAL LABORATORY SCIENCES

5.4.1 INTRODUCTION

This is the pre-service Ordinary Diploma in Clinical laboratory, designed and organized in six semesters, each with specified courses. The program is geared towards producing innovative, creative and flexible Laboratory technicians who will cope with dynamic changes in the profession, technology and socioeconomic needs so as to be able to render comprehensive, quality and cost-effective Technicians that meet the health needs of Tanzanians in military and the community at large.

5.4.2 AIMS OF THE PROGRAMME

The program aims to achieve the following goals:

- 5.4.2.1** To form a flexible course that is responsive to dynamic and rapidly changing world of work and the society;
- 5.4.2.2** To provide Medical laboratory skills, knowledge and behaviors that is vital to learners, employers and the community;
- 5.4.2.3** To entice self-realization and team work skills that enable graduates to perform efficiently and aspire for higher level training;
- 5.4.2.4** To build capacity to participate in the implementation of National Health Policy and its accompanying Operational Guidelines;
- 5.4.2.5** To propagate and promote moral, legal and ethical conduct among health workers within the national legal framework; and
- 5.4.2.6** To produce innovative, creative and flexible graduates who can manage current and emerging health challenges

5.4.3 OBJECTIVES

This program is intended to provide basic knowledge, skills and attitude necessary for acquiring lifelong learning and good foundation for further studies in Health laboratory Sciences. The main objective is to produce technicians who are competent and able to work flexibly at different health care settings. The specific objectives of this program include to:-

- 5.4.3.1** Provide basic knowledge, skills and attitudes relevant to Medical Laboratory Sciences;

- 5.4.3.2** Steer creativity and innovativeness in response to challenges inherent in Medical Laboratory Sciences practice and health care delivery;
- 5.4.3.3** Promote the spirit and skills of teamwork and build critical thinking and problem-solving skills in Medical Laboratory Sciences and health care practice;
- 5.4.3.4** Promote a good sense of citizenship, accountability and responsibility to graduates;
- 5.4.3.5** Stimulate life-long learning behavior for nurses and advancement of nursing profession;
- 5.4.3.6** Provide global outlook of the learning content and context so as to widen learners' advantages into regional and international labor markets.

5.4.4 PROGRAM DURATION

The program duration is 3 consecutive years with two semesters per year which makes a total of six semesters for the whole course.

5.4.5 ASSESSMENT METHODS

Students will be assessed under two types of assessment. Continuous Assessment (CA) and End of Semester Examination (SE) Continuous assessment shall be carried out in progression of the modules of the programme. This category will include assignments, written and practical/OSPE/Oral test depending on the nature of the modules. The following assessment methods will be used:

5.4.5.1 Assignments

The aim of assignments is to reinforce the learning process by involving the participation of the students in finding the solution to a given question or problem which require decision-making so as to enhance self-development. Assignments may be administered in a form of written work or practical exercises that are done individually or in a group. There shall be a minimum of two individual assignments per modules per semester.

5.4.5.2 Continuous Assessment

There shall be a minimum of two written test for each module during a semester which will be invigilated by a panel of the institute tutors for duration of not less than two (2) hours.

5.4.5.3 End of Semester Examinations

There shall be end of semester examination for each module. It shall constitute of written and practical/OSPE examination (depending on the nature of the module to be assessed). Duration of the examination shall be prescribed in each of the respective assessment plan.

5.4.5.4 Field Practical Training

Field practical training shall be conducted during NTA LEVEL 5 and NTA level 6 second semester for four weeks at district hospital laboratory or higher. The aim of field is to expose learners to real working environment and is considered as part of practical training. The field practice shall be assessed by oral presentation and submission field report by each student as well as supervisor's confidential report. Field practical shall not contribute to GPA calculation but will be used as requirement for a student to be allowed to sit for end of semester II examinations.

5.4.6 REGULATIONS FOR EXAMINATIONS/MANAGEMENT OF ASSESSMENT

The management of assessment and its mode of conduct shall be managed according to examination regulation for health training institutions, 2019 approved by ministry of health and NACTVET

5.4.7 END OF SEMESTER EXAMINATIONS

5.4.7.1 A candidate must have passed continuous assessment test for particular examinable modules

5.4.7.2 A candidate will be eligible for the end of semester examination if she/he has at least aggregate score of at least 50% of THEORY COMPONENT and score of 80 50% of the PRACTICAL COMPONENT for modules with practical component before appearing for end of semester examination of that particular modules

5.4.7.3 A candidate must have attained a minimum of the 80% attendance of the taught and practical class hours for each particular module.

5.4.7.4 A candidate failing to attain this requirement under genuine reasons shall repeat that particular modules when next offered. A candidate should have been registered by NACTVET and issued an examination number.

5.4.7.5 A candidate should have an identification card provided by the respective training institution and/or awarding authority.

5.4.7.6 Continuous Assessment and Semester examination shall contribute 40% and 60% of the final grade, respectively.

5.4.8 EXAMINATION APPEALS

The appeal of candidates, who have not satisfied the examiners, should follow the process described in the training regulation of the MoHCDGEC.

5.4.9 SCORE RANGES AND GRADING SYSTEM

Marks will be awarded out of 100 %. The marks so obtained from different assessment components will be clustered and graded as follows:

5.4.10 AWARD CLASSIFICATION

Table 1: Standards Applying to Letter Grades for NTA level 4 and NTA level 5

S/N	SCORE RANGE	GRADE	POINTS	DEFINITIONS
1.	80 – 100	A	4	Excellent
2.	65 – 79	B	3	Very good
3.	50 – 64	C	2	Good
4.	40 – 49	D	1	Satisfactory
5.	0.0 – 39	F	0	Failure
6.	–	I	-	Incomplete
7.	0	Q	-	Disqualification

Table 2: Standards Applying Letters Grades for NTA Level 6

S/N	SCORE RANGE	GRADE	POINTS	DEFINITIONS
1.	75 – 100	A	5	Excellent
2.	70 – 74	B+	4	Very good
3.	65 – 69	B	3	Good
4.	50 – 64	C	2	Satisfactory
5.	40-49	D	1	Poor
6.	0.0 – 39	F	0	Failure
7.	–		-	Incomplete
8.	0	Q	-	Disqualification

5.4.11 AWARD CLASSIFICATION AND CONDITION OF THE AWARD

An award shall be given to student who satisfies the following conditions.

5.4.11.1 He/she must have successfully completed all modules for which the award is to be made and;

5.4.11.2 He/She has achieved the minimum cumulative Grade Point Average (GPA) equivalent to a PASS

Table 3: Classification of Awards for NTA level 4 and NTA level 5

CLASS OF AWARD	CUMMULATIVE GPA
First class	3.5 - 4.0
Upper Second class	3.0 - 3.4
Pass	2.0 - 2.9

Table 4: Classification of award for NTA level 6

CLASS OF AWARD	CUMMULATIVE GPA
First class	4.4 - 5.0
Upper Second class	3.5 - 4.3
Lower Second class	2.7 - 3.4
Pass	2.0 - 2.6

5.4.12 TRAINING REGULATIONS

5.4.12.1 Reporting time

The student who has been selected to join the course of Medical laboratory Science should report to the college within or not more than 14 days after the commencement of the studies. Failure to do so without genuine reasons implies forfeiting the opportunity of being registered for the course.

5.4.12.2 Discontinuation from training

Discontinuation of student from studies due to Non Academic Reasons shall be handled according to disciplinary code for Students in Health Training Institutions. Any student who interrupts the training at any time or is absent for a continuous period of 21 days within a semester without genuine reasons, will be discontinued. If training interruption for such period was due to sickness or any other compelling reasons such as loss of parents/guardians, will be allowed to

repeat semester provided that his reason of absence were verified by the head of the institution.

5.4.12.3 Period of absence

Any student who interrupts the training at any time or is absent due to sickness for a total of 20 days within a semester may be allowed to repeat a semester.

5.4.12.4 Conduct and behavior

Any student who is admitted for Diploma in Medical Laboratory course should have good adherence to the College regulations approved by MoH/NACTVET.

5.4.13 SUMMARY OF PROGRAMME MODULES

NTA L4 (MLT)

PROGRAMME MODULES

Semester I

S/N	Module Code	Module Title	Class	Credit Hours
1.	MLT 04101	Laboratory Instrumentation	Core	13
2.	MLT 04102	General Human Anatomy and Physiology	Core	13
3.	MLT 04103	Laboratory Safety and Waste Management	Core	9
4.	MLT 04104	Communication and life skills	Fundamental	7
5.	MLT 04105	Laboratory Ethics and Code of Conduct	Core	6
6.	MLT 04106	Prevention and Control of Communicable and Non Communicable Diseases	Core	8
		TOTAL CREDITS		56

Semester II

S/N	Module Code	Module Title	Class	Credit Hours
1.	MLT 04207	Routine Laboratory Investigations	Core	14
2.	MLT 04208	Laboratory Specimen Management	Core	11
3.	MLT 04209	Computer Applications	Fundamental	13
4.	MLT 04210	Systemic Human Anatomy and Physiology	Core	12
5.	MLT 04211	Laboratory Reagents and Solutions	Core	14
TOTAL CREDITS				64

NTA L5 (MLT)

PROGRAMME MODULES

Semester I

S/N	Module Code	Module Title	Class	Credit Hours
1.	MLT 05101	Laboratory Logistic Management		9
2.	MLT 05102	Maintenance and Calibration of Laboratory Instruments and Equipments		12
3.	MLT 05103	Principles of entrepreneurship		11
4.	MLT 05104	Laboratory Quality Assurance		11
5.	MLT 05105	Health Records Management		9
6.	MLT 05106	General Pathology		8
TOTAL CREDITS				60

Semester II

S/N	Module Code	Module Title	Class	Credit Hours
1.	MLT 05207	Hematology and Blood Transfusion		13
2.	MLT 05208	Medical Microbiology and Immunology		14
3.	MLT 05209	Clinical Chemistry		12
4.	MLT 05210	Medical Parasitology		12
5.	MLT 05211	Cytology and Histology		9
		TOTAL CREDITS		60

NTA L6 (MLT)

PROGRAMME MODULES

Semester I

S/N	Module Code	Module Title	Class	Credit Hours
1.	MLT 06101	Laboratory Quality Management		14
2.	MLT 06102	Operational Research		12
3.	MLT 06103	Principles of Epidemiology and Biostatistics		12
4.	MLT 06104	Leadership and Management		12
5.	MLT 06105	Introduction to Diagnostic Molecular Biology		10
		TOTAL CREDITS		60

Semester II

S/N	Module Code	Module Title	Class	Credit Hours
1.	MLT 06206	Diagnostic Parasitology and Medical Entomology		12
2.	MLT 06207	Diagnostic Microbiology and Immunology		14
3.	MLT 06208	Diagnostic Clinical Chemistry		10
4.	MLT 06209	Diagnostic Cytology and Histology		10
5.	MLT 06210	Diagnostic Haematology and Blood Transfusion		14
		TOTAL CREDITS		60

5.4.14 AWARD

Upon successful completion of the programme a graduate will be awarded a Diploma in Medical Laboratory Science the MoHCDGEC/HLPC.



MILITARY COLLEGE OF MEDICAL SCIENCES

P.O. Box 60000, Dar es Salaam, Tanzania.

Tel: +255736161720

E-mail: mcmslugalo@gmail.com

Website: www.mcms.ac.tz